

PopUp

temporary
program.

POPUP^A

#1 'Boutique'

50 sqm / 538 sqft



POPUP



POPUP

Designed to be quick and easy to install, ALU adaptable fixtures are made for fast-paced retailers. Flexible and reconfigurable, our systems maximize your pop-up store potential.

With a space of 538 sqft / 50 Sqm, the shop is fitted to display a total of:

- 340 folded items,
- 370 hanged items,
- 108 hanged accessories,
- 2 Fitting rooms,
- 1 small cash desk

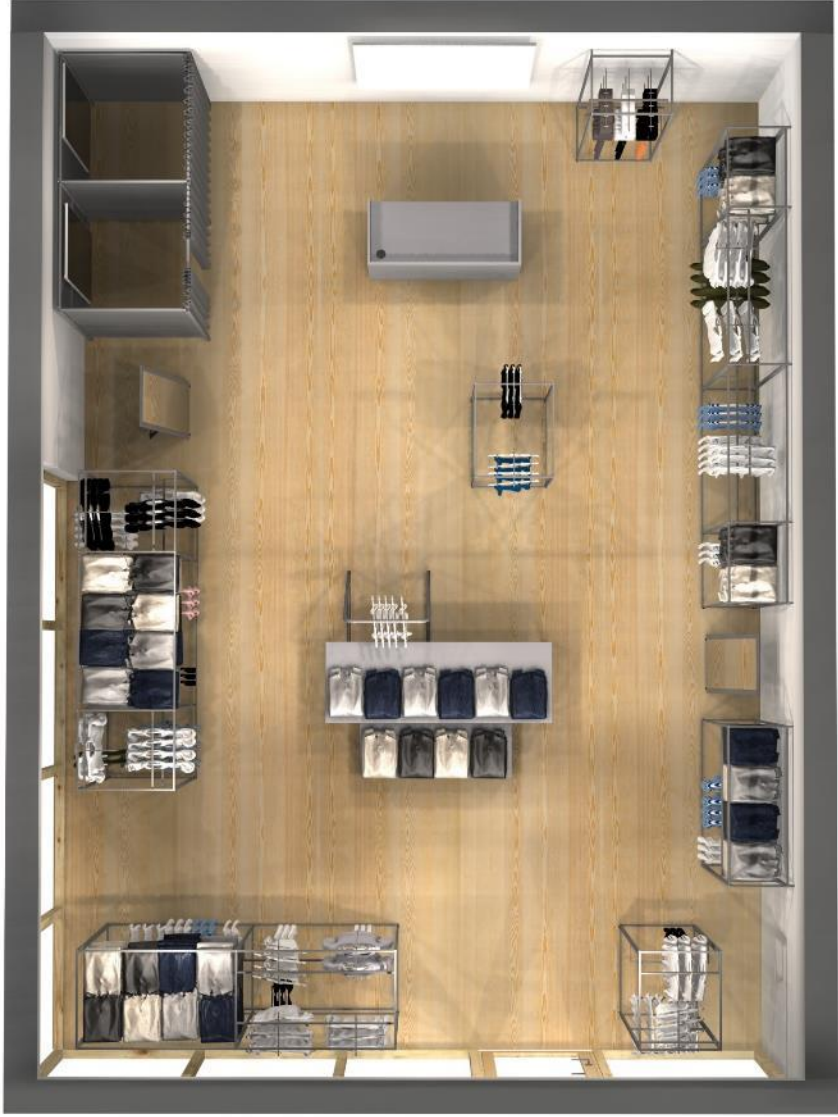


\$ 34 / sqft

Price can vary according to fixtures density. Pricing is based on the layout proposed: includes fixtures, wooden shelves, Fitting rooms, mirrors and cash desk.



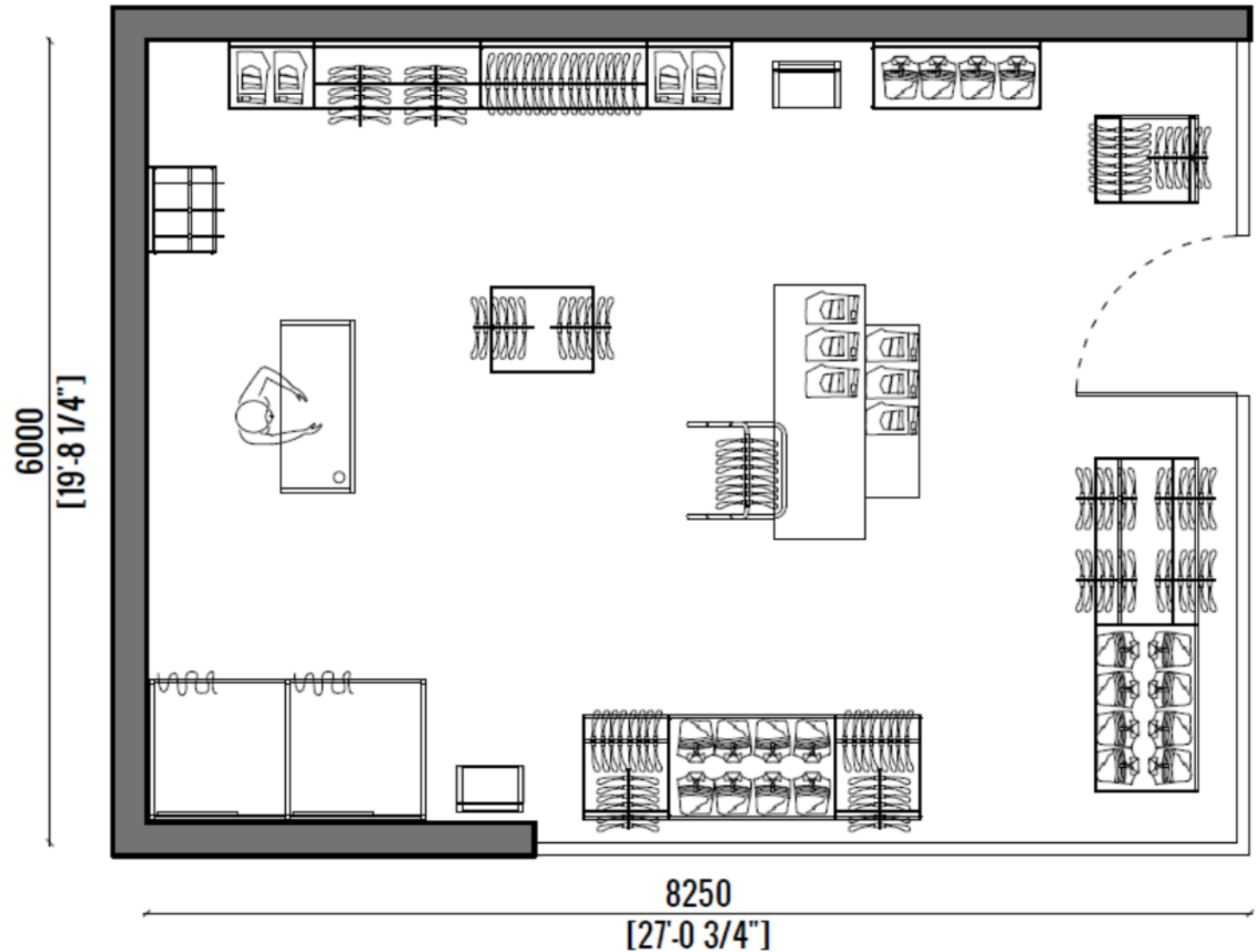






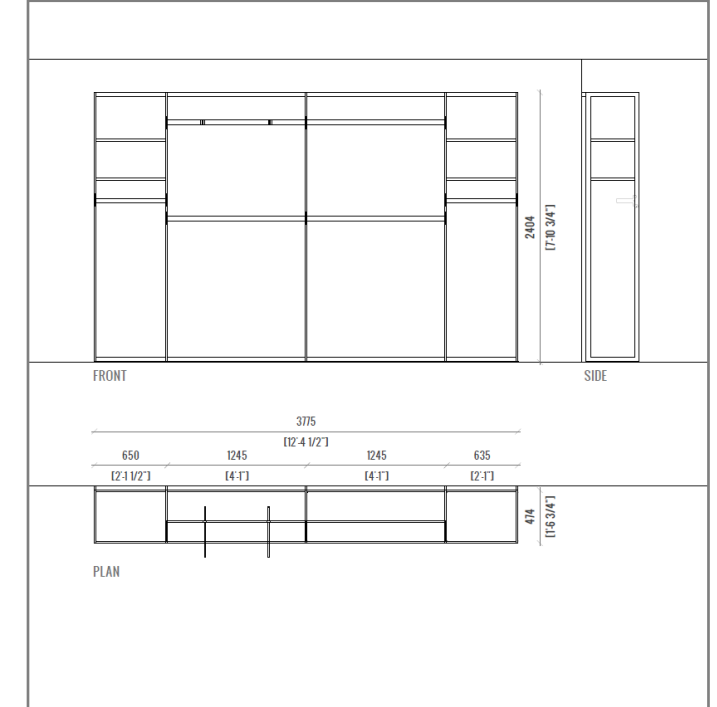
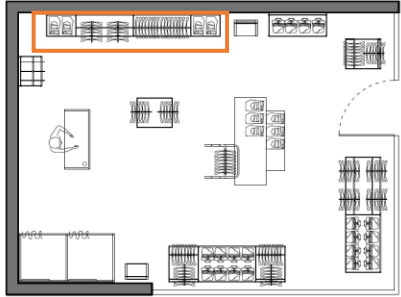
Plan «Apparel»

50 sqm/538 sqft



Configuration 01

Wall mounted 24"+ extensions 48"/24"



CODES

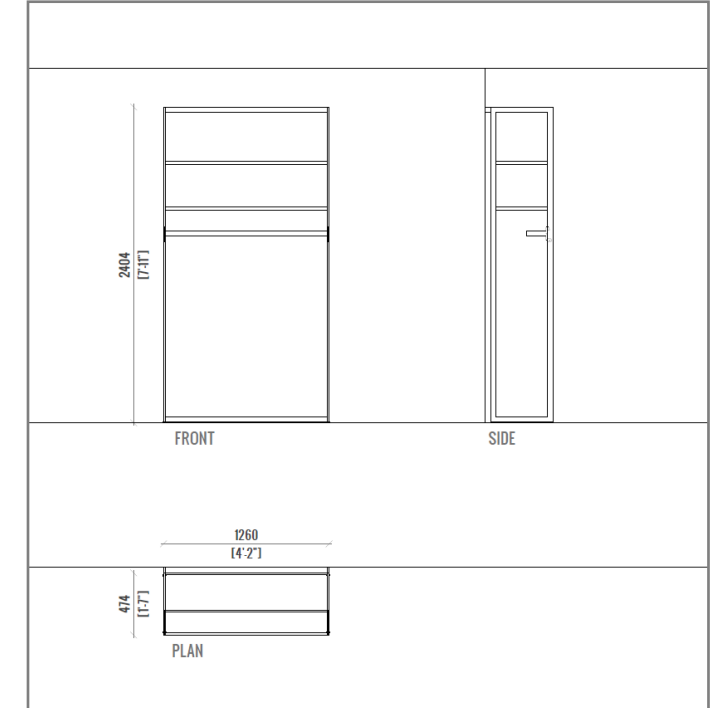
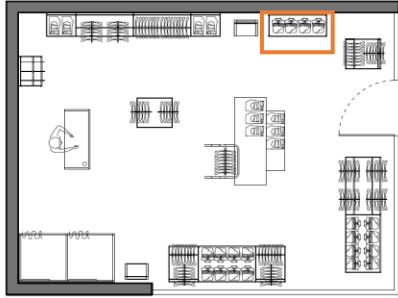
- 1 x Unit H95" W25" 19/32 D18" 57/64
- 2 x Extension H95" W49" 1/64 D18" 57/64
- 1 x Extension H95" W25" D18" 57/64
- 4 x Crossbar Cantilever W48"
- 2 x Crossbar Cantilever W24"
- 2 x Faceout
- 4 x Full Shelf Holder (set of 2)
- 4 x Wood Shelf W24" (Melamine Chipboard)

CAPACITY

- Folded: 40
- Hanging: 90

Configuration 02

Wall mounted 48"



CODES

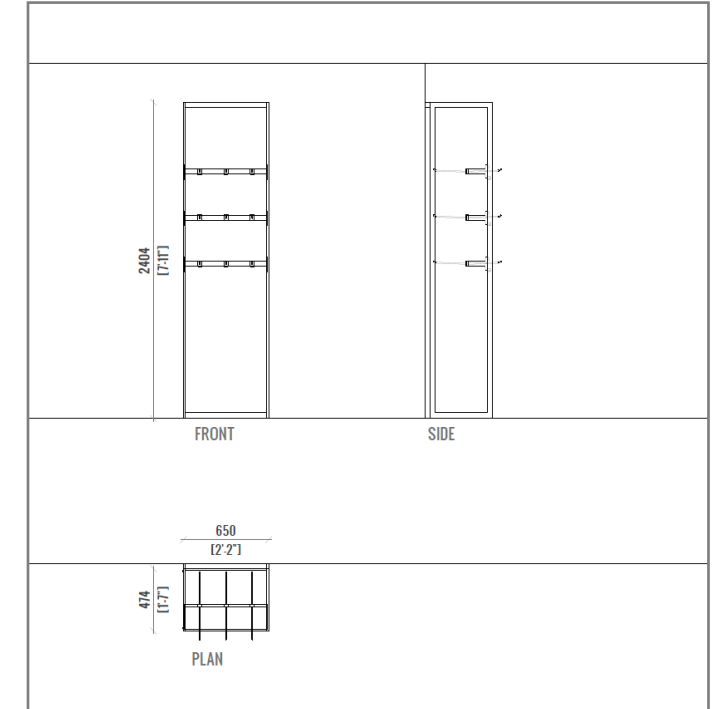
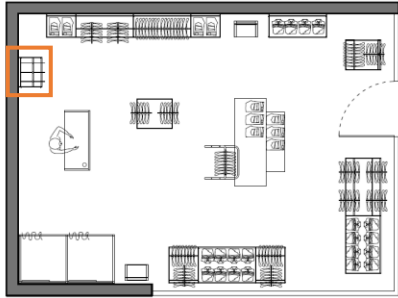
- 1 x Unit H95" W49" 5/8 D18" 57/64
- 1 x Crossbar Cantilever W48"
- 2 x Full Shelf Holder (set of 2)
- 2 x Wood Shelf W48" (Melamine Chipboard)

CAPACITY

- Folded: 40
- Hanging: 20

Configuration 03

Wall mounted 24"



CODES

1 x Unit H95" W25" 19/32 D18" 57/64

3 x Crossbar Cantilever W24"

9 x Peghook

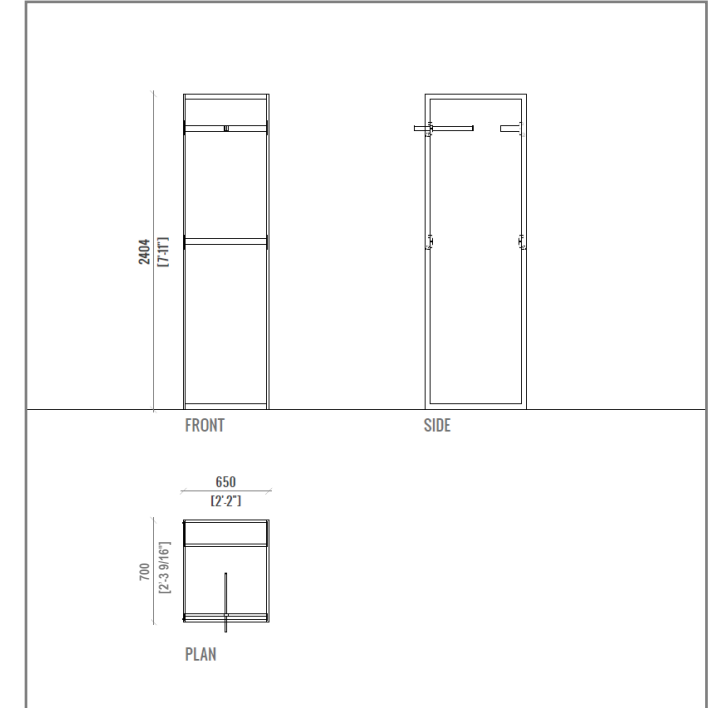
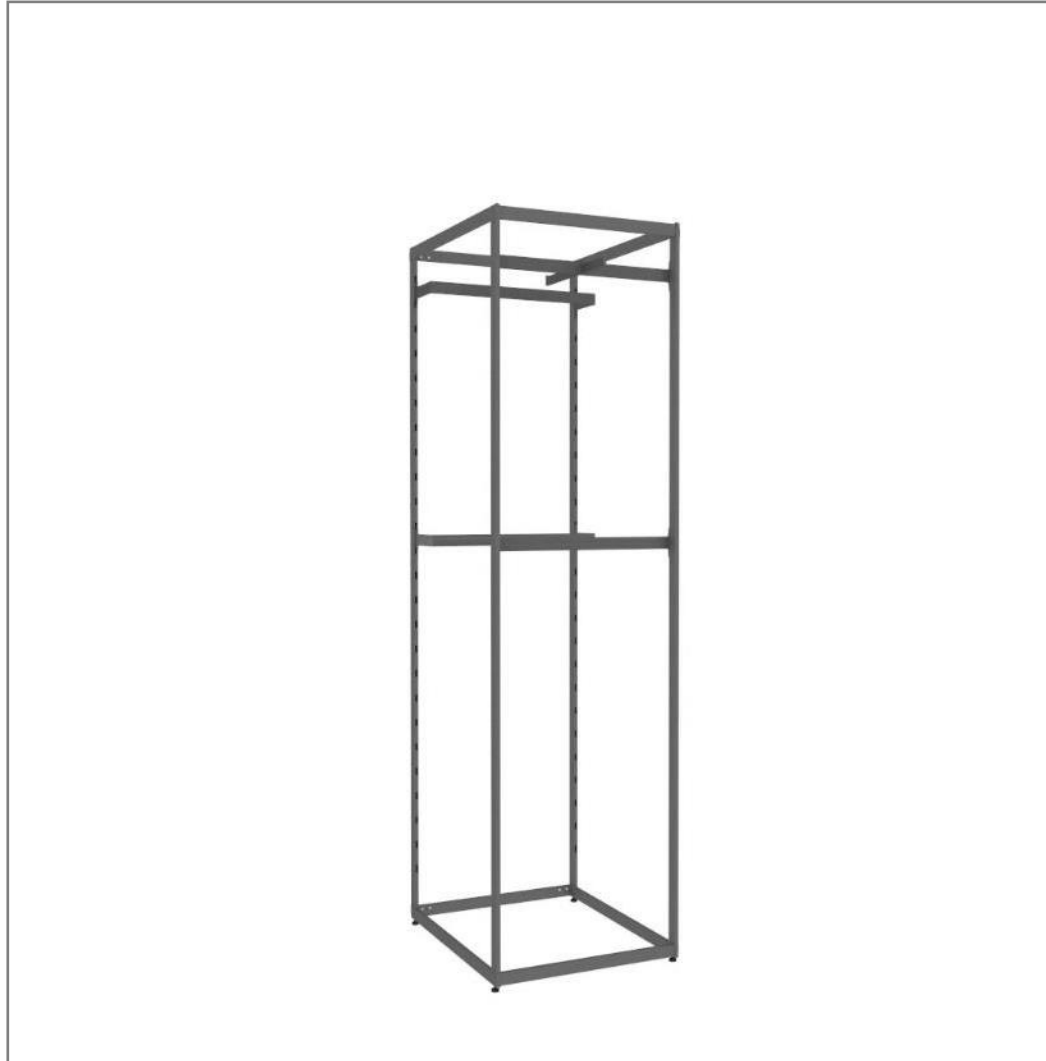
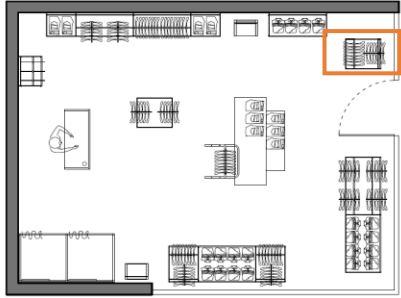
CAPACITY

Folded: 00

Hanging: 108

Configuration 04

Vertical unit 24"



CODES

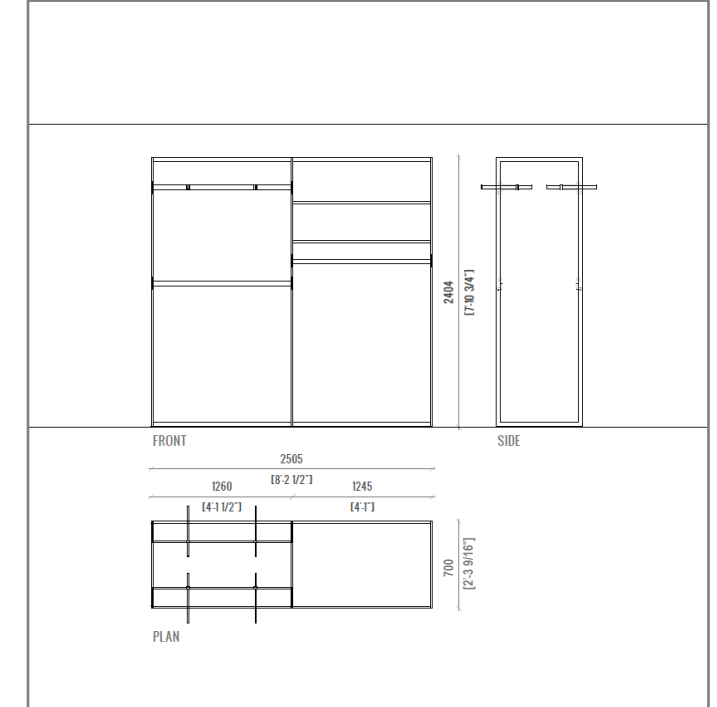
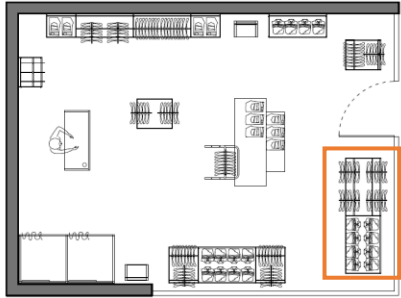
- 1 x Unit H95" W25" 19/32 D 27" 9/16
- 2 x Crossbar Cantilever W24"
- 2 x Crossbar W24"
- 1 x Faceout

CAPACITY

- Folded: 00
- Hanging: 35

Configuration 05

Vertical unit 48'' + extension 48''



CODES

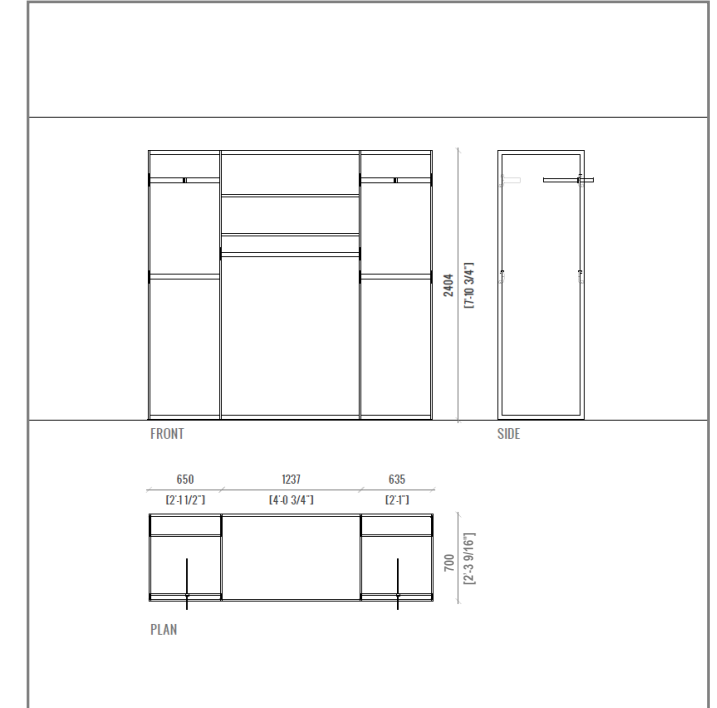
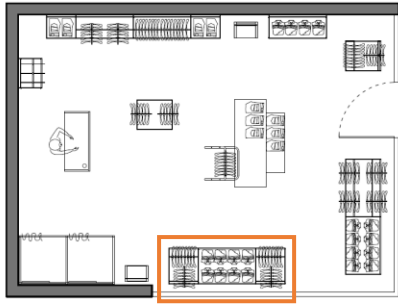
- 1 x Unit H95'' W49'' 5/8 D 27'' 9/16
- 1 x Extension H95'' W49'' 1/64 D 27'' 9/16
- 2 x Crossbar Cantilever W48''
- 4 x Crossbar W48''
- 4 x Faceout
- 2 x Full Shelf Holder (set of 2)
- 2 x Wood Shelf W48'' (Melamine Chipboard)

CAPACITY

- Folded: 80
- Hanging: 100

Configuration 06

Vertical unit 24'' + extensions 48''/24''



CODES

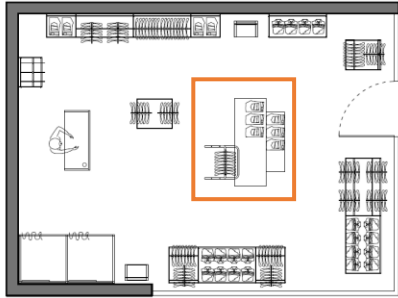
- 1 x Unit H95'' W25'' 19/32 D 27'' 9/16
- 1 x Extension H95'' W49'' 1/64 D 27'' 9/16
- 1 x Extension H95'' W25'' D 27'' 9/16
- 6 x Crossbar W24''
- 2 x Crossbar W48''
- 2 x Crossbar Cantilever W24''
- 2 x Faceout
- 2 x Full Shelf Holder (set of 2)
- 2 x Wood Shelf W48'' (Melamine Chipboard)

CAPACITY

- Folded: 80
- Hanging: 110

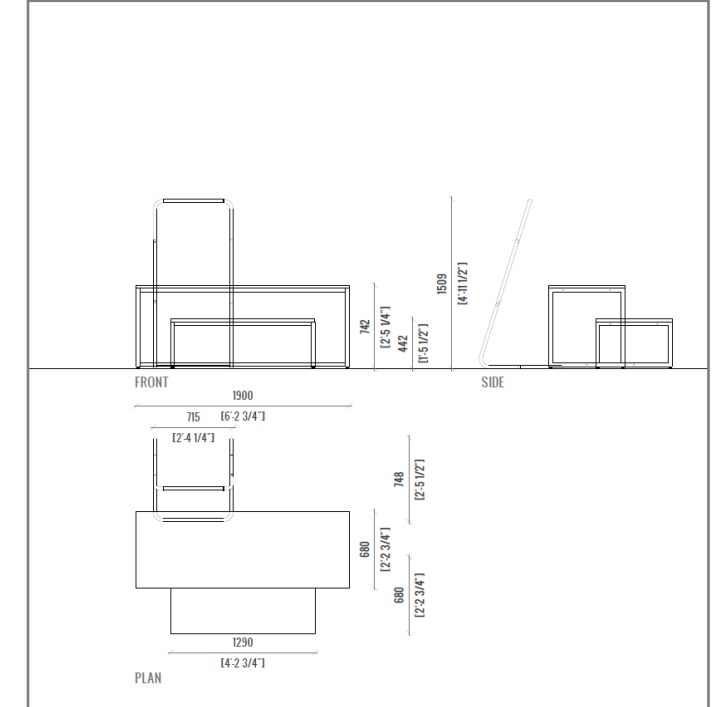
Freestanding 01

TQ Table H28'' + TQ Table H16'' + Mini rack 59''



CODES

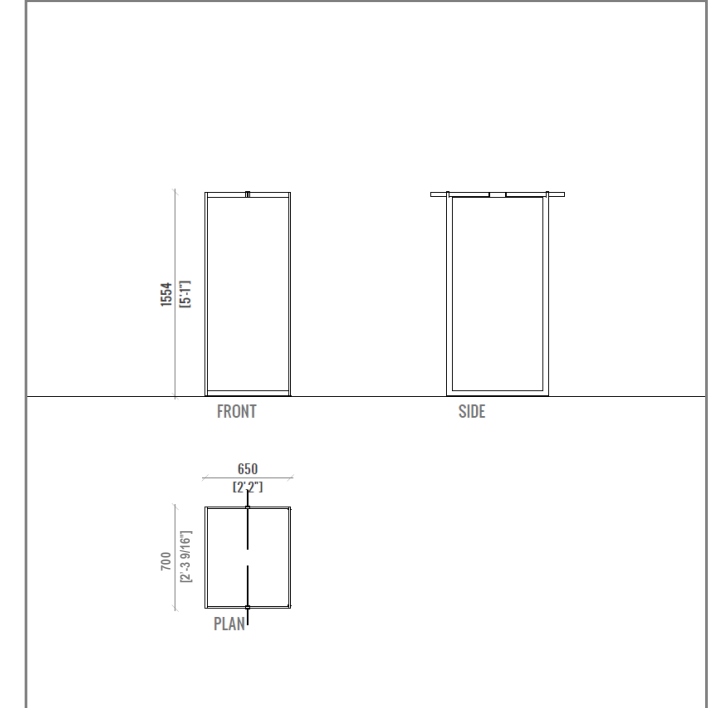
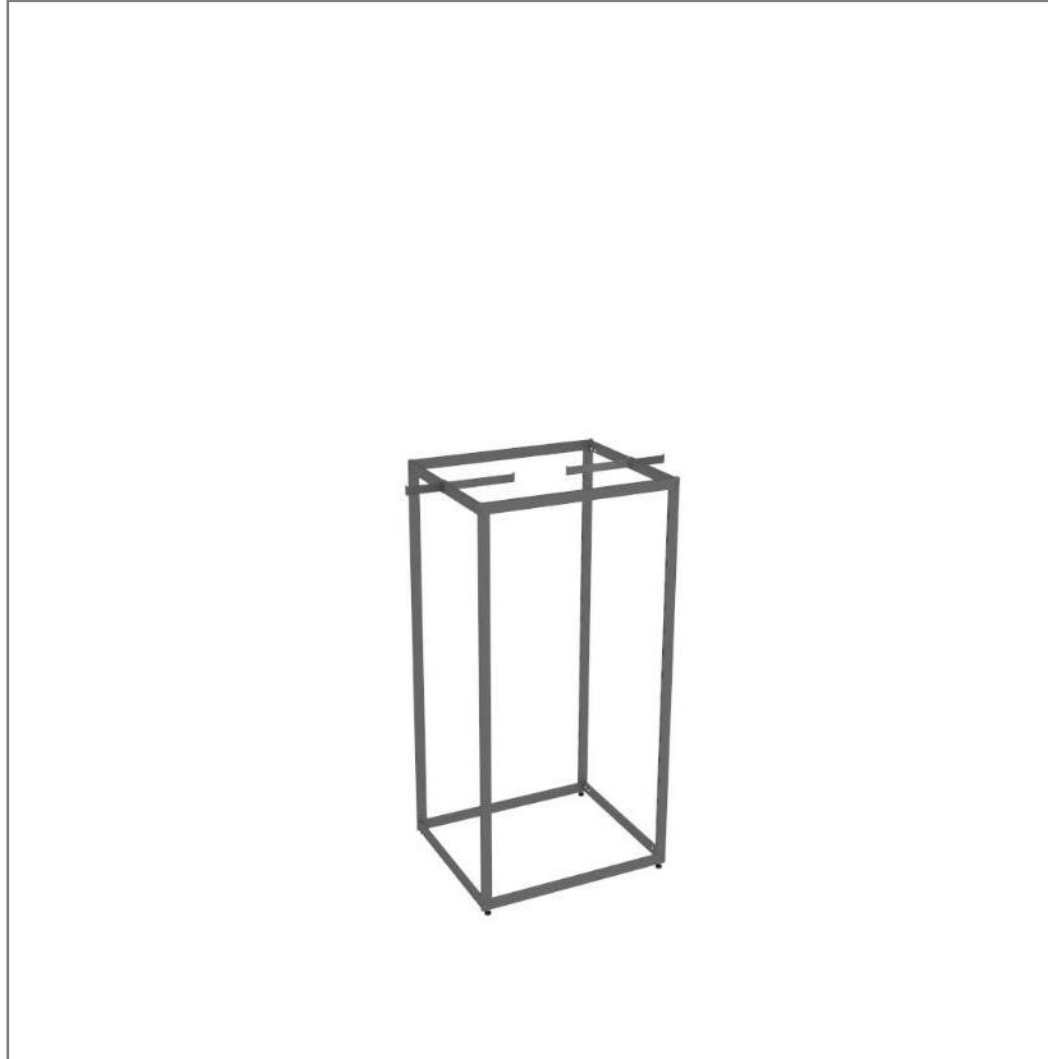
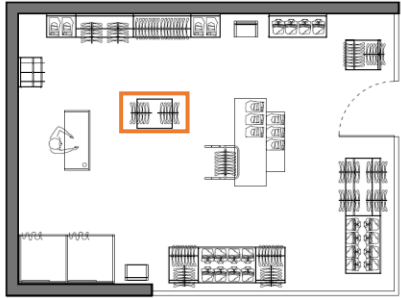
- 1 x Table H27'' 9/16 W74'' 51/64 D26'' 49/64
- 1 x Table H15'' 3/4 W50'' 25/32 D26'' 49/64
- 1 x Table Top W74'' 51/64 D26'' 49/64
- 1 x Table Top W50'' 25/32 D26'' 49/64
- 1 x Mini Rack W24'' H59''



CAPACITY
Folded: 100
Hanging: 8

Freestanding 03

Prisma 24"x61"



CODES

1 x Unit H61" 1/32 W25" 19/32 D 27" 9/16

2 x Faceout

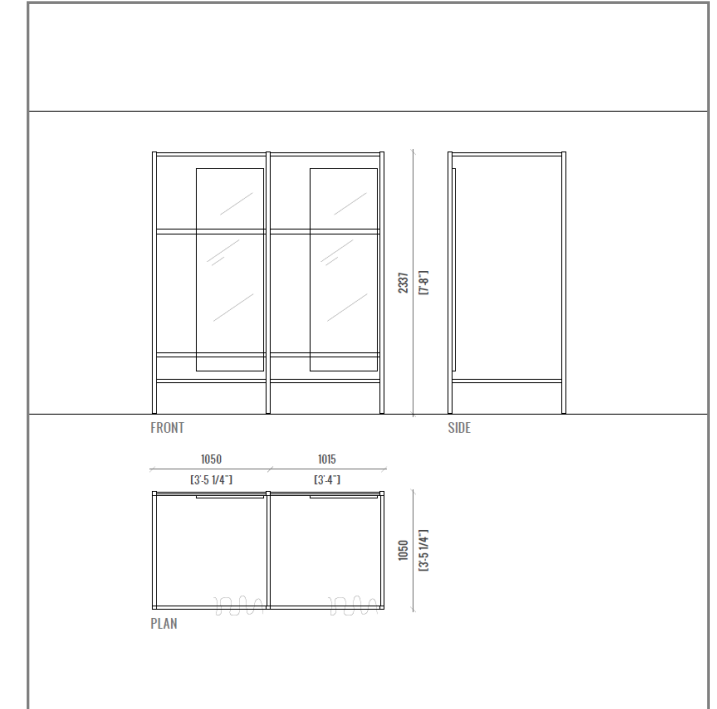
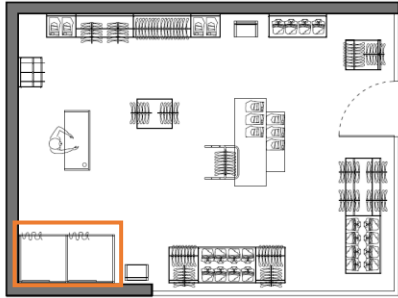
CAPACITY

Folded: 00

Hanging: 10

Fitting room

Modular Fitting room. 2 modules

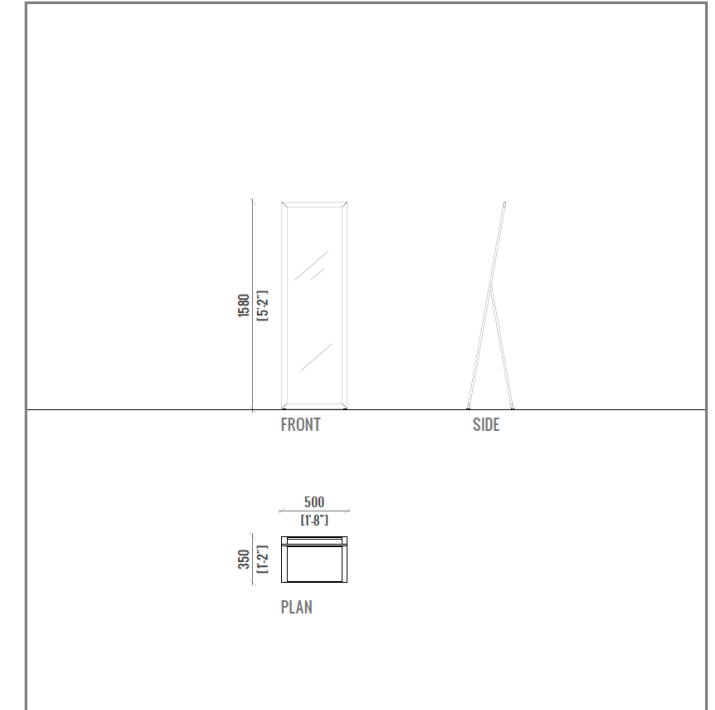
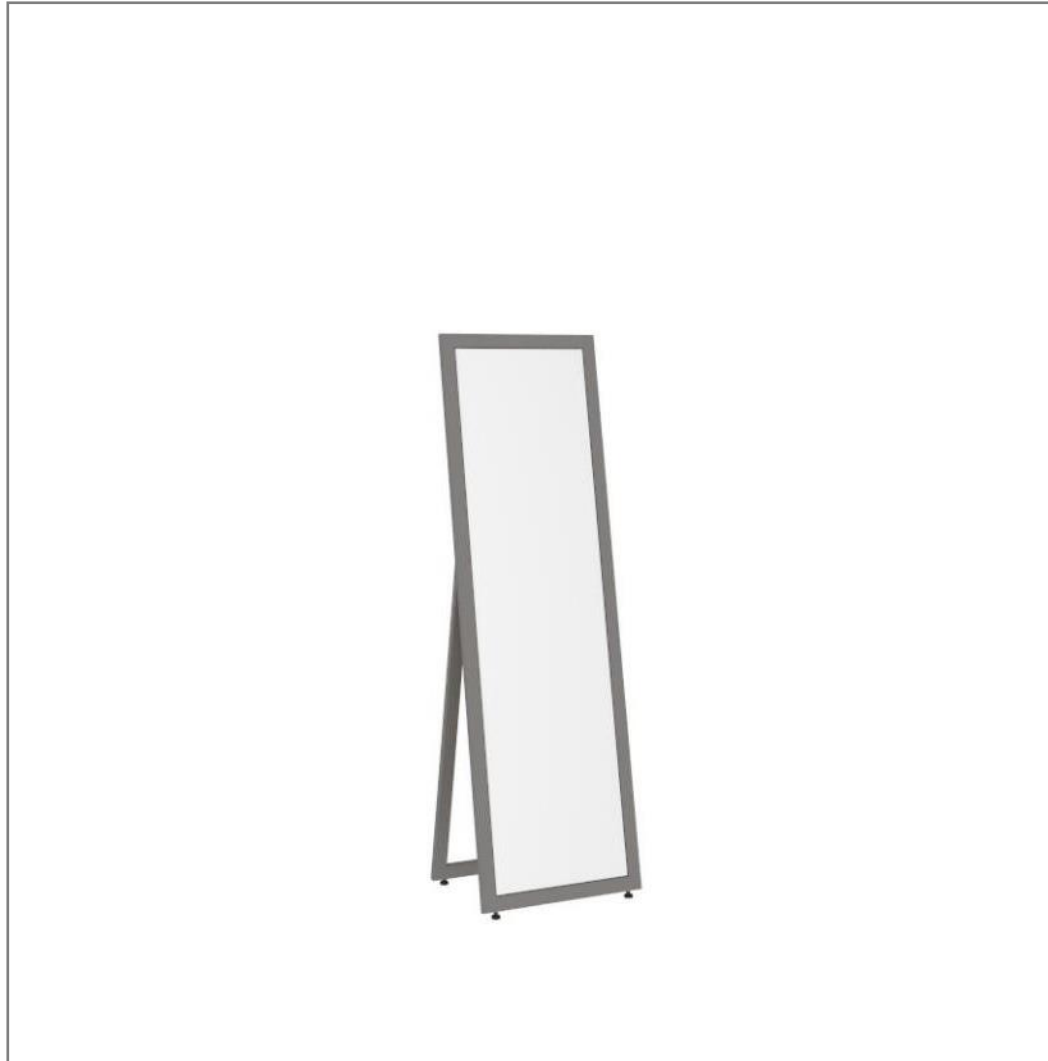
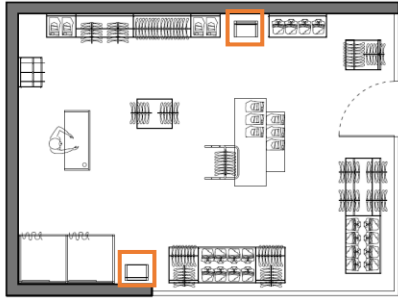


CODES

- 1 x Fitting Room H95" W41" 11/32 D41" 11/32
- 1 x Extension H95" W39" 61/64 D41" 11/32
- 2 x Mirror
- 2 x Curtains Set

Mirror

Freestanding mirror

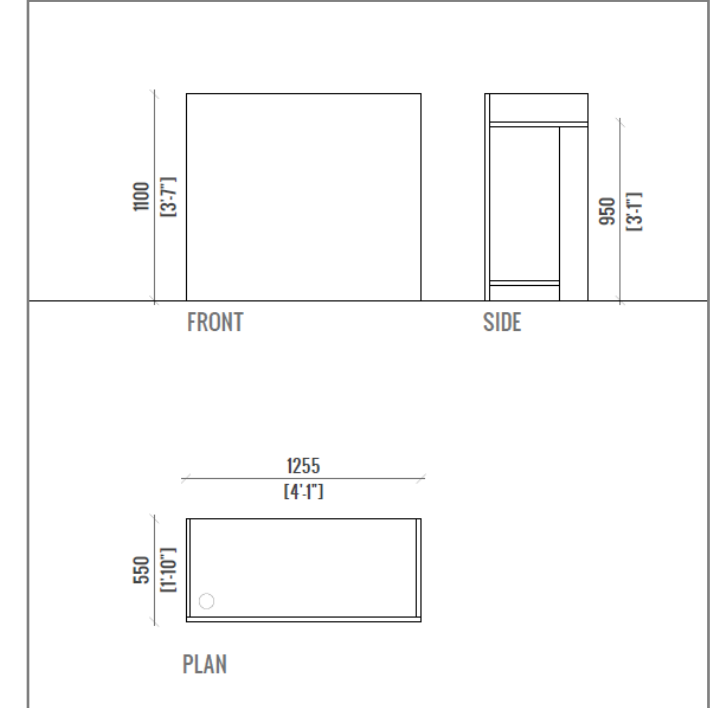
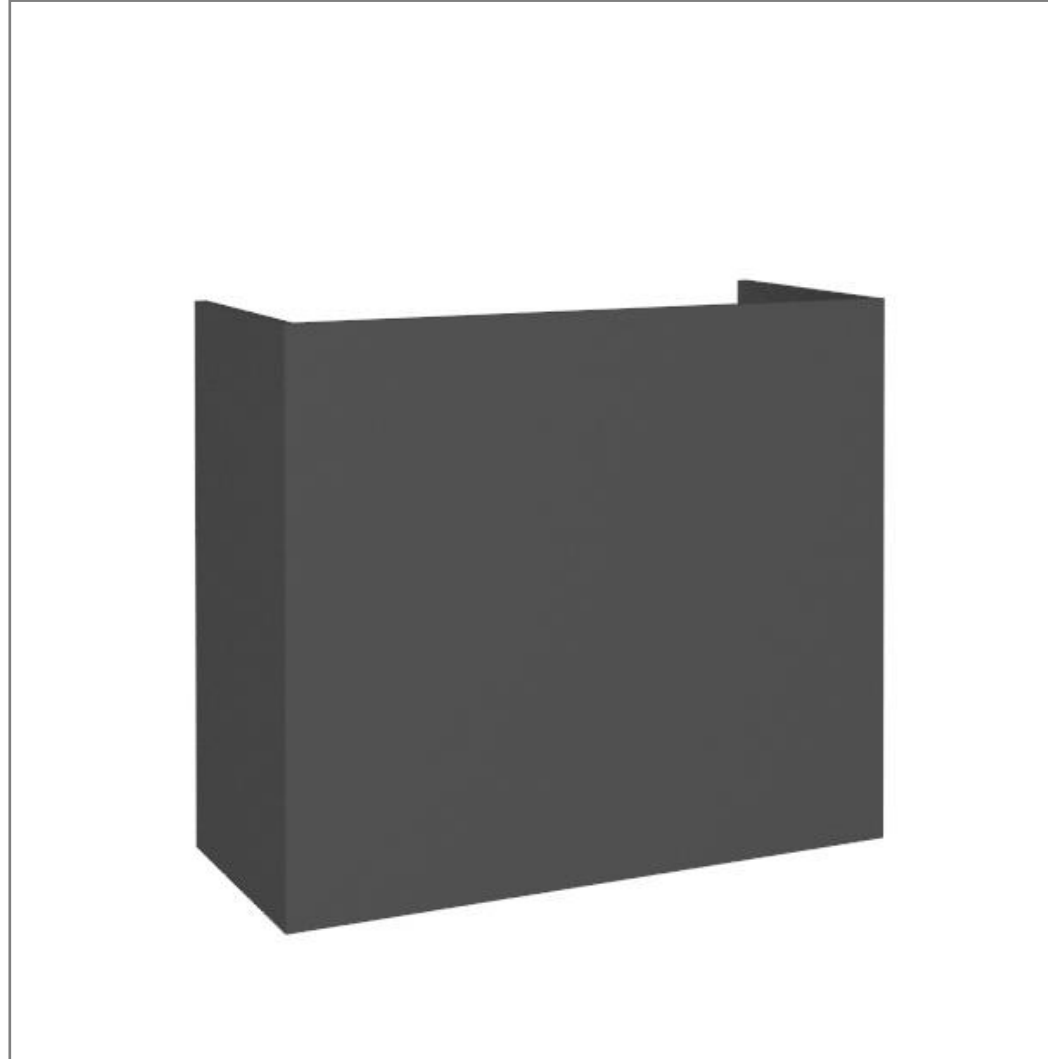
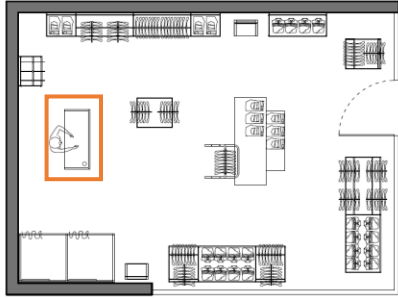


CODES

1 x Mirror H62" 13/64 W19" 11/16 D13" 25/32

Cash desk

Modular desk in graphite gray melamine. 1 module



FEATURES

1 x Cash Desk H43" 5/16 W49" 13/32 D21" 21/32
(Melamine Chipboard)

#2 Sport and Jeans.

75 sqm / 807 sqft



POPUP

Designed to be quick and easy to install, ALU adaptable fixtures are made for fast-paced retailers. Flexible and reconfigurable, our systems maximize your pop-up store potential.

With a space of 807 sqft / 75 Sqm, the shop is fitted to display a total of:

- 510 folded items,
- 530 hanged items,
- 216 hanged accessories,
- 2 Fitting rooms,
- 1 small cash desk



\$ 32 / sqft

Price can vary according to fixtures density. Pricing is based on the layout proposed: includes fixtures, wooden shelves, Fitting rooms, mirrors and cash desk.



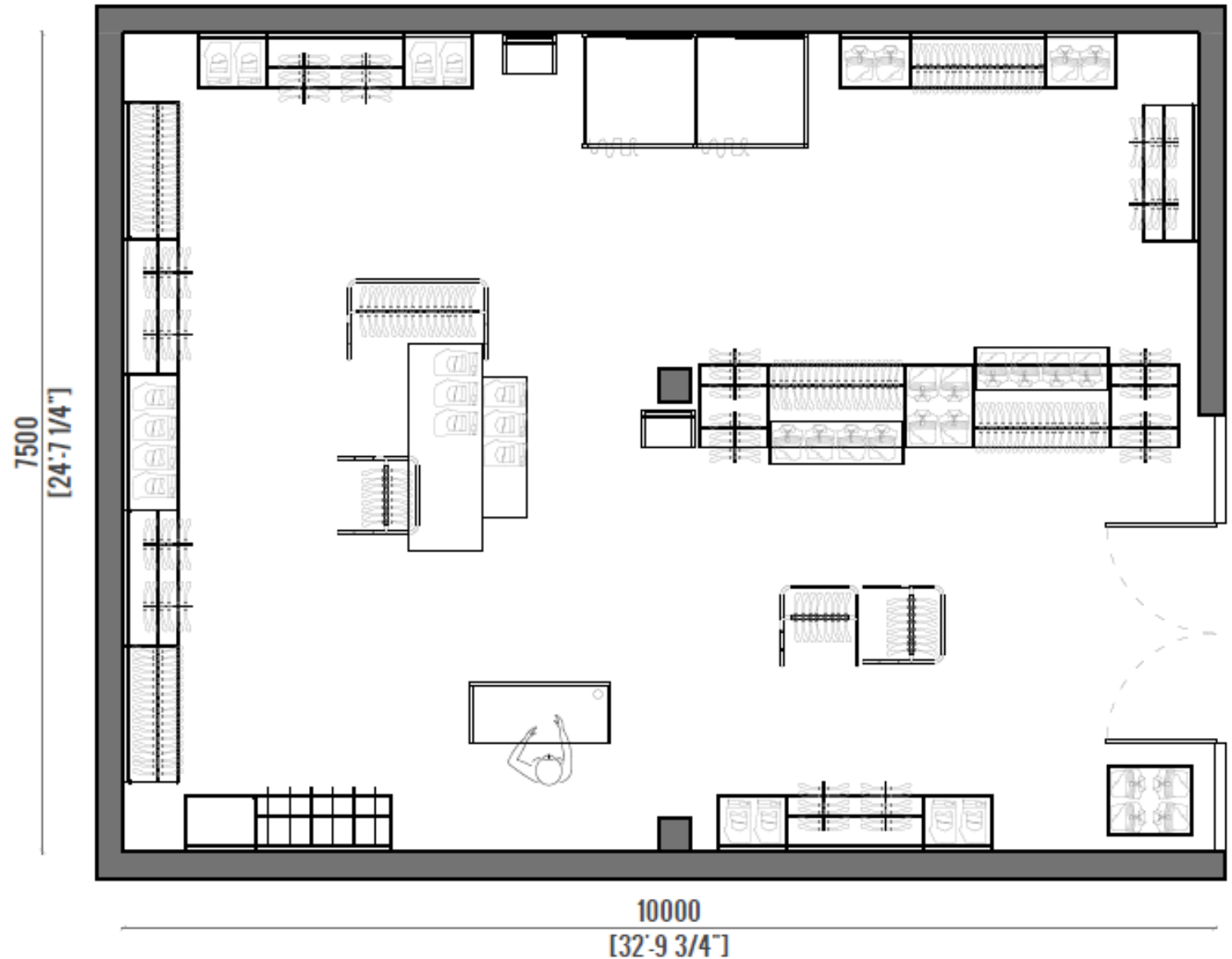






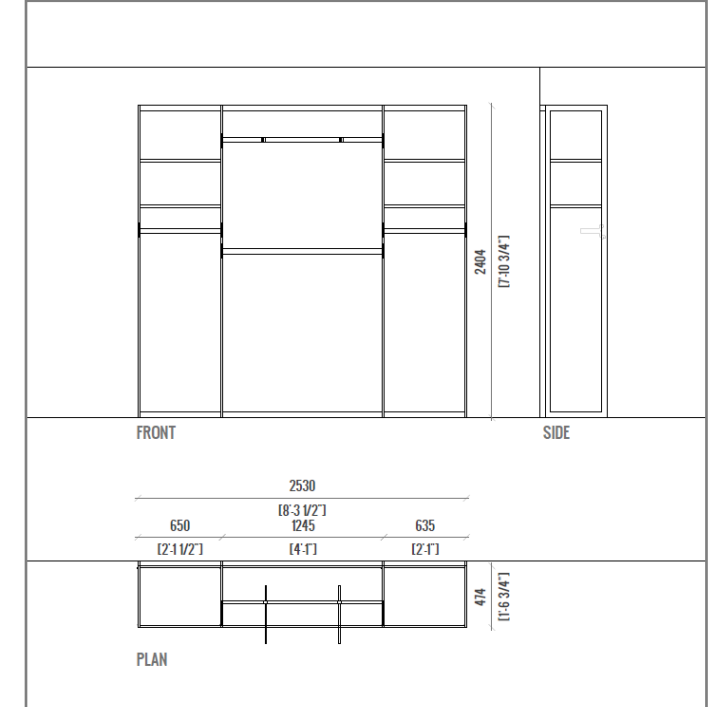
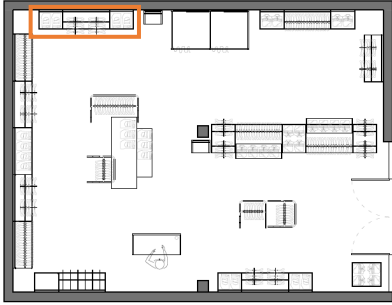
Plan «Sport and Jeans»

75 sqm/807 sqft



Configuration 13

Wall mounted 24"+ extensions 48"/24"



CODES

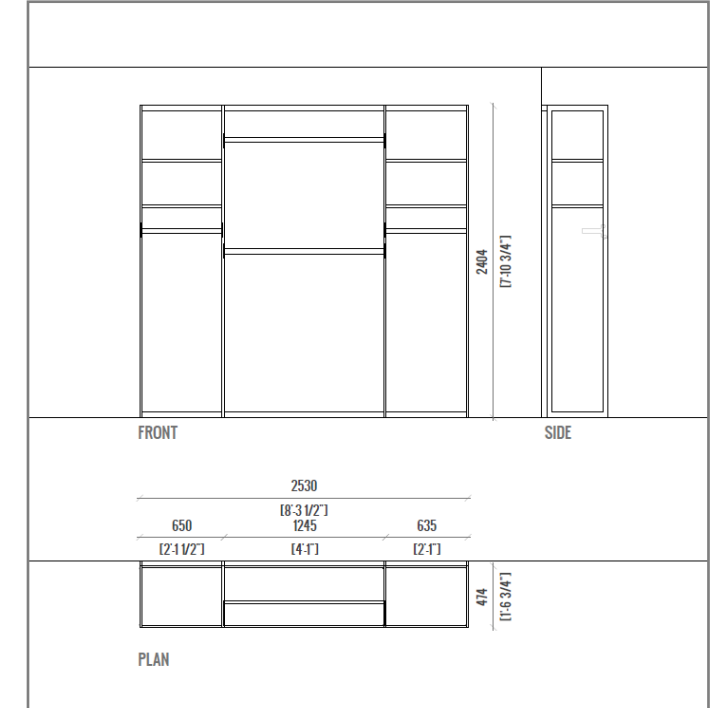
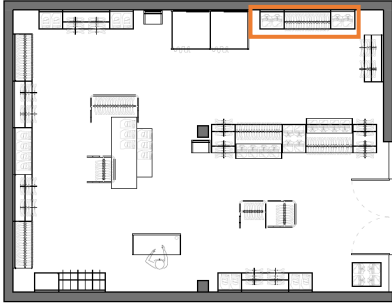
- 1 x Unit H95" W25" 19/32 D18" 57/64
- 1 x Extension H95" W49" 1/64 D18" 57/64
- 1 x Extension H95" W25" D18" 57/64
- 2 x Crossbar Cantilever W48"
- 2 x Crossbar Cantilever W24"
- 2 x Faceout
- 4 x Full Shelf Holder (set of 2)
- 4 x Wood Shelf W24" (Melamine Chipboard)

CAPACITY

- Folded: 40
- Hanging: 50

Configuration 14

Wall mounted 24"+ extensions 48"/24"



CODES

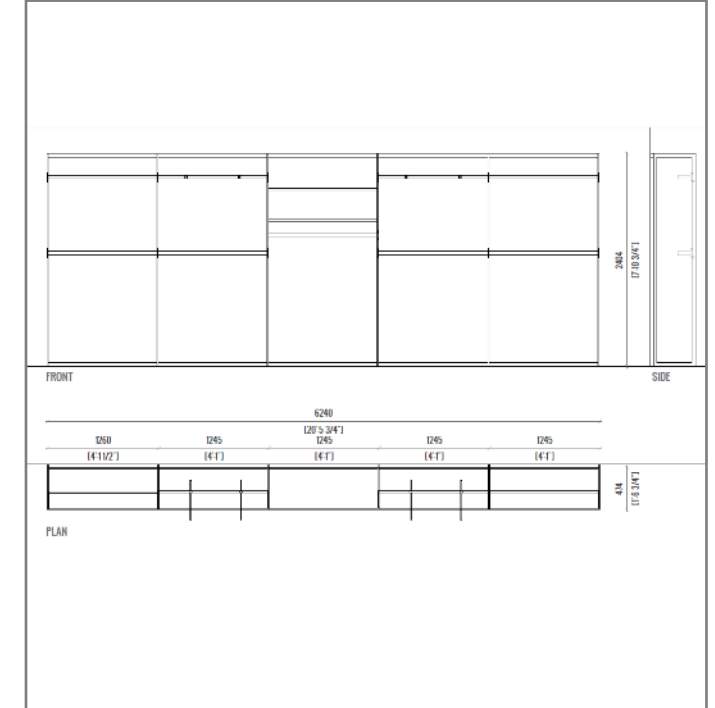
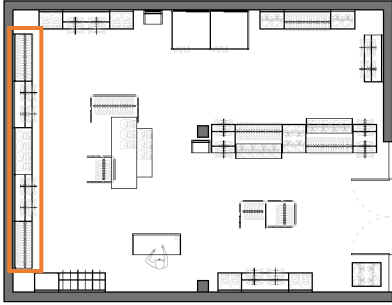
- 1 x Unit H95" W25" 19/32 D18" 57/64
- 1 x Extension H95" W49" 1/64 D18" 57/64
- 1 x Extension H95" W25" D18" 57/64
- 2 x Crossbar Cantilever W48"
- 2 x Crossbar Cantilever W24"
- 4 x Full Shelf Holder (set of 2)
- 4 x Wood Shelf W24" (Melamine Chipboard)

CAPACITY

- Folded: 40
- Hanging: 60

Configuration 15

Wall mounted 48" + extension 48"



CODES

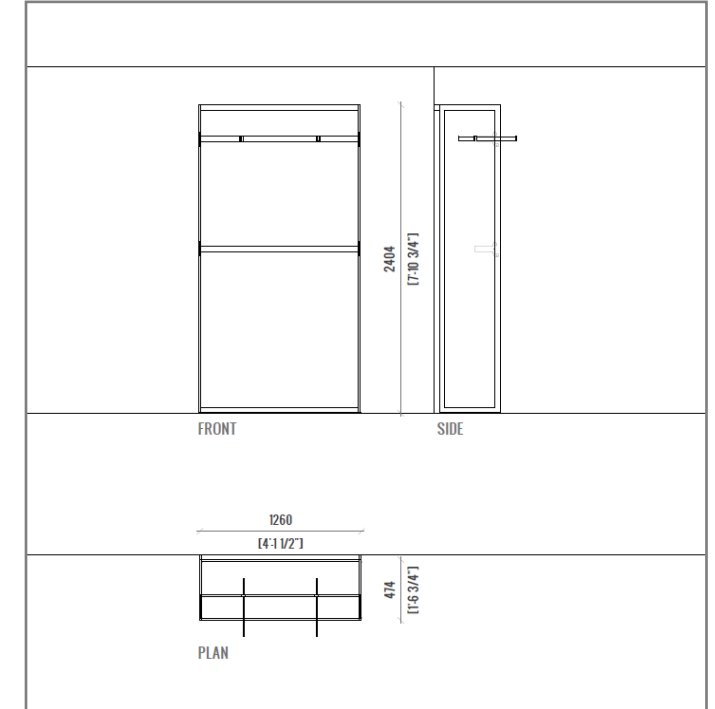
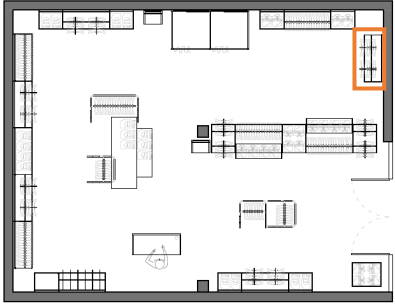
- 1 x Unit H95" W49" 5/8 D18" 57/64
- 4 x Extension H95" W49" 1/64 D18" 57/64
- 9 x Crossbar Cantilever W48"
- 2 x Full Shelf Holder (set of 2)
- 2 x Wood Shelf W48" (Melamine Chipboard)
- 4 x Faceout

CAPACITY

- Folded: 40
- Hanging: 160

Configuration 09

Wall mount 48"



CODES

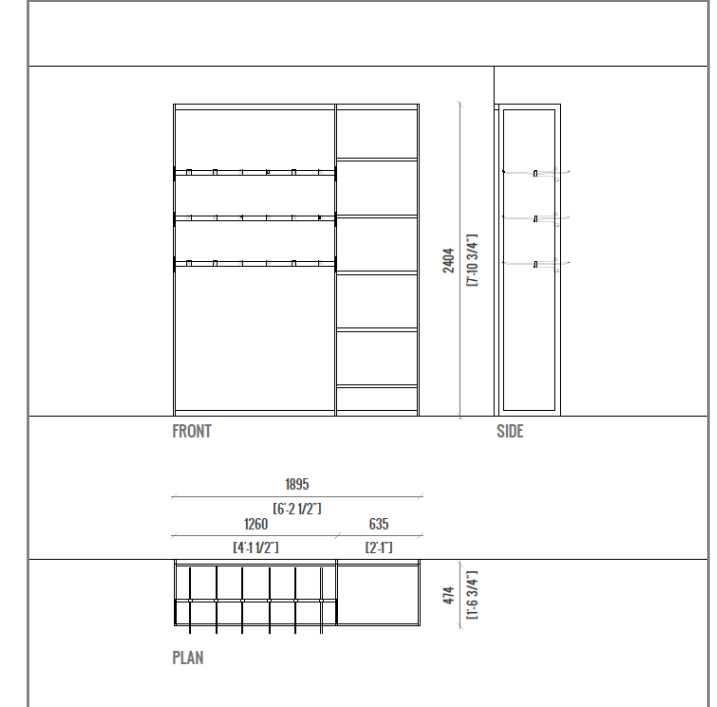
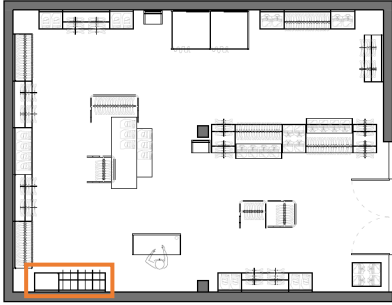
1 x Unit H95" W49" 5/8 D18" 57/64
2 x Crossbar Cantilever W48"
2 x Faceout

CAPACITY

Folded: 00
Hanging: 30

Configuration 16

Wall mount 48'' + extension 24''



CODES

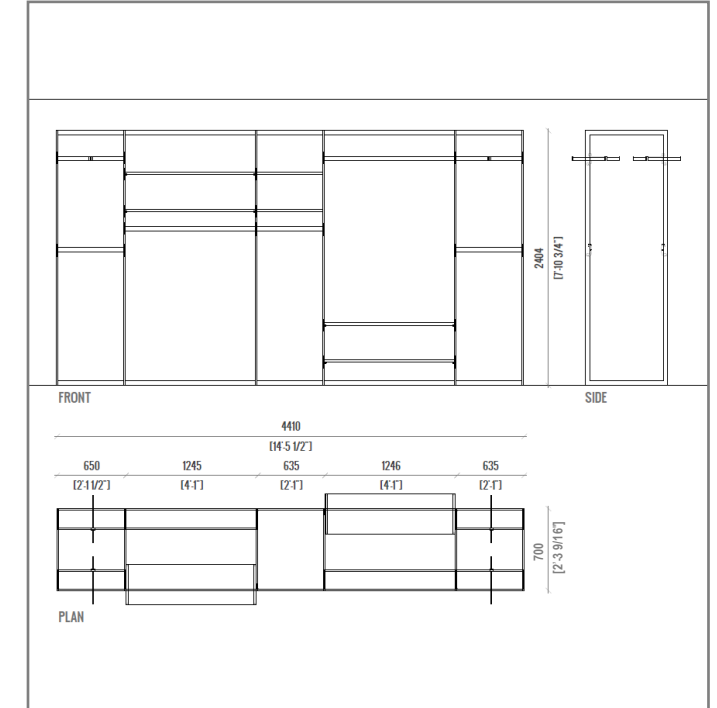
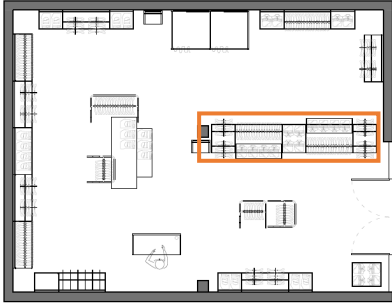
- 1 x Unit H95'' W49'' 5/8 D18'' 57/64
- 1 x Extension H95'' W25'' D18'' 57/64
- 3 x Crossbar Cantilever W48''
- 18 x Peghook
- 5 x Full Shelf Holder (set of 2)
- 5 x Wood Shelf W24'' (Melamine Chipboard)

CAPACITY

- Folded: 50
- Hanging: 216

Configuration 17

Vertical unit 24'' + extensions 48''/24''



CODES

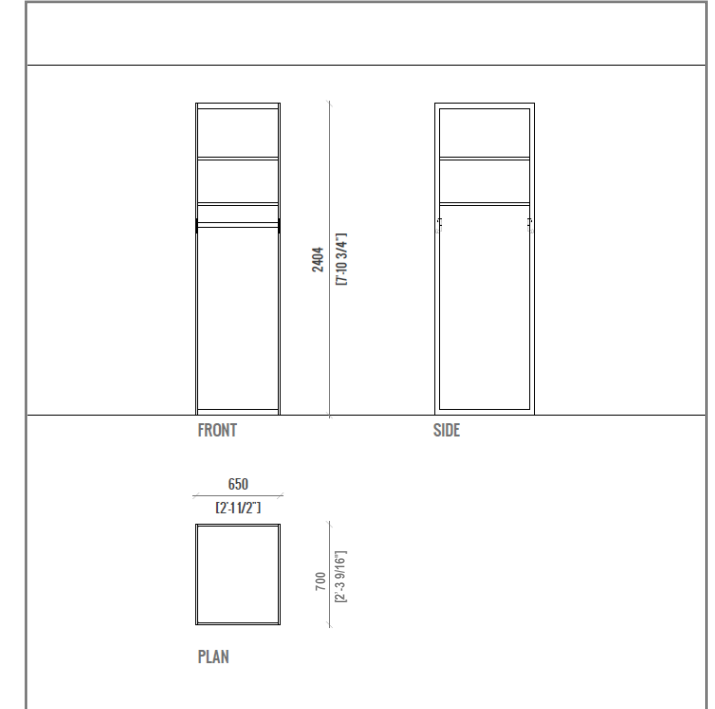
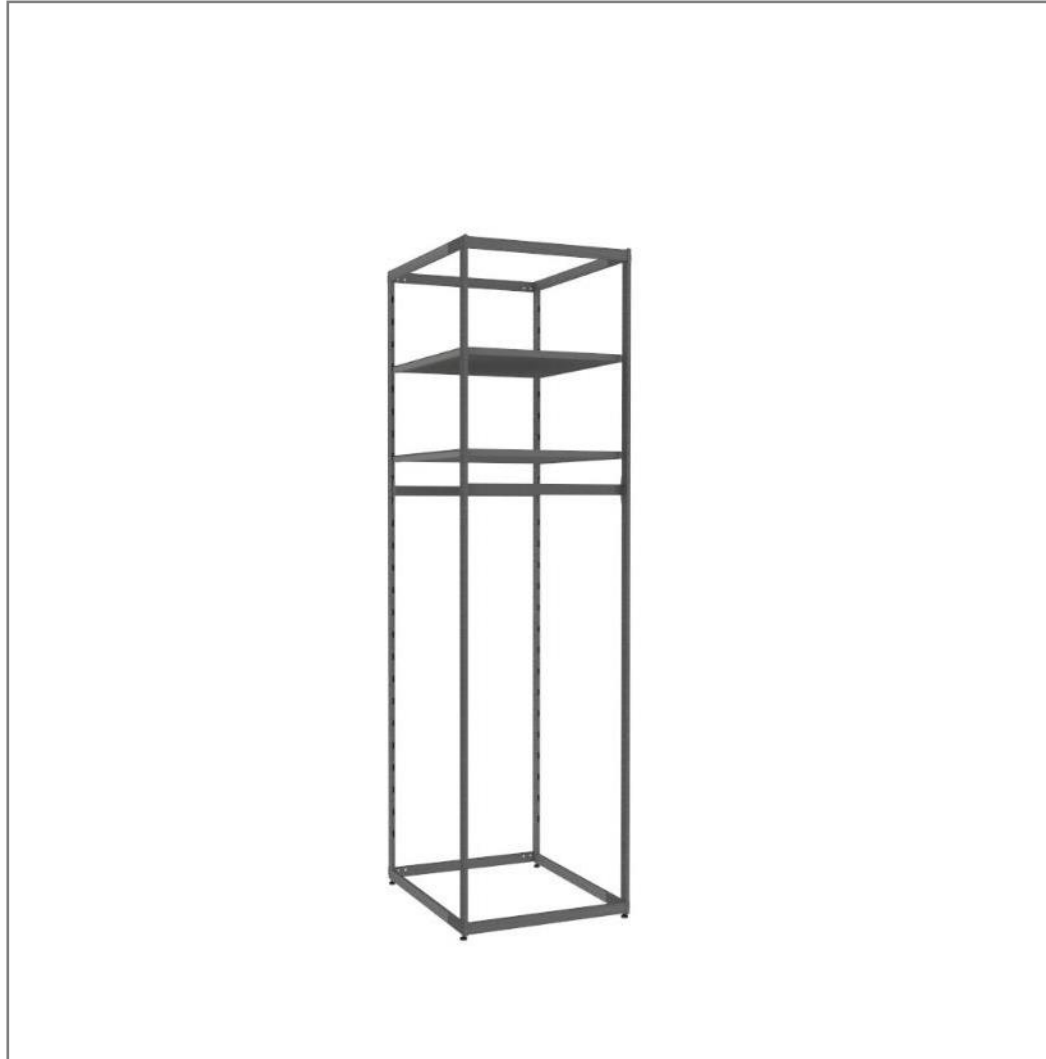
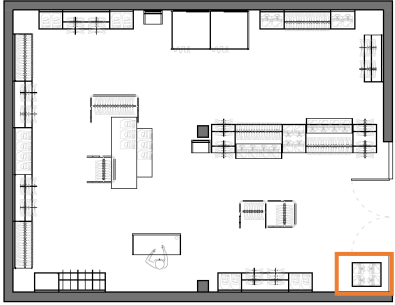
- 1 x Unit H95'' W25'' 19/32 D 27'' 9/16
- 2 x Extension H95'' W49'' 1/64 D 27'' 9/16
- 2 x Extension H95'' W25'' D 27'' 9/16
- 6 x Crossbar W24''
- 4 x Crossbar Cantilever W48''
- 4 x Crossbar Cantilever W24''
- 2 x Full Shelf Holder (set of 2)
- 2 x Wood Shelf W24'' (Melamine Chipboard)
- 4 x Faceout
- 8 x Direct Shelf W48''

CAPACITY

- Folded: 200
- Hanging: 170

Configuration 18

Vertical unit 24"



CODES

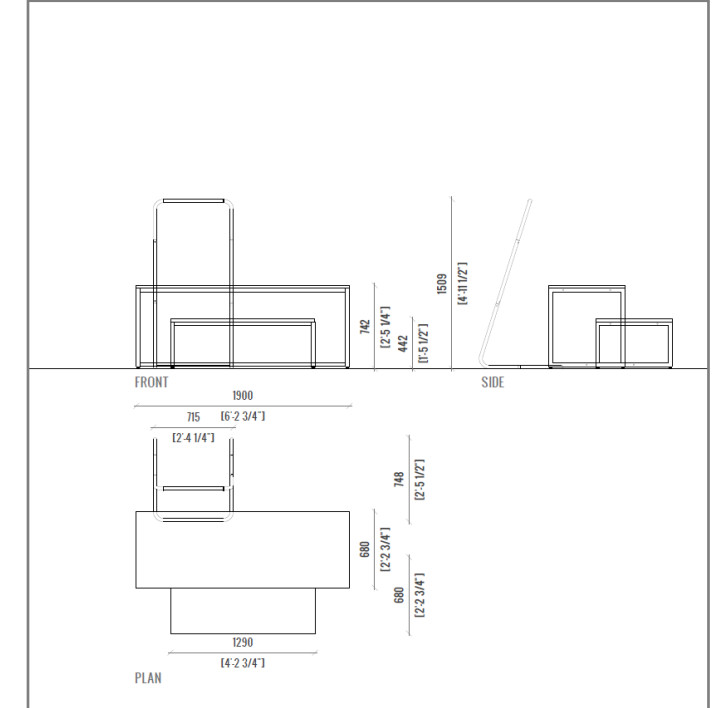
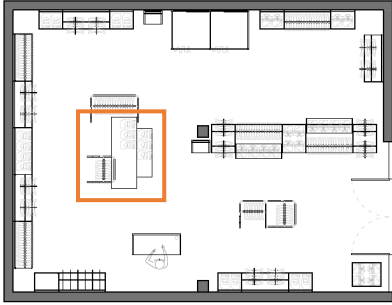
- 1 x Unit H95" W25" 19/32 D 27" 9/16
- 2 x Crossbar W24"
- 2 x Full Shelf Holder (set of 2)
- 2 x Wood Shelf W24" (Melamine Chipboard)

CAPACITY

- Folded: 40
- Hanging: 20

Freestanding 01

TQ Table H28'' + TQ Table H16'' + Mini rack 59''



CODES

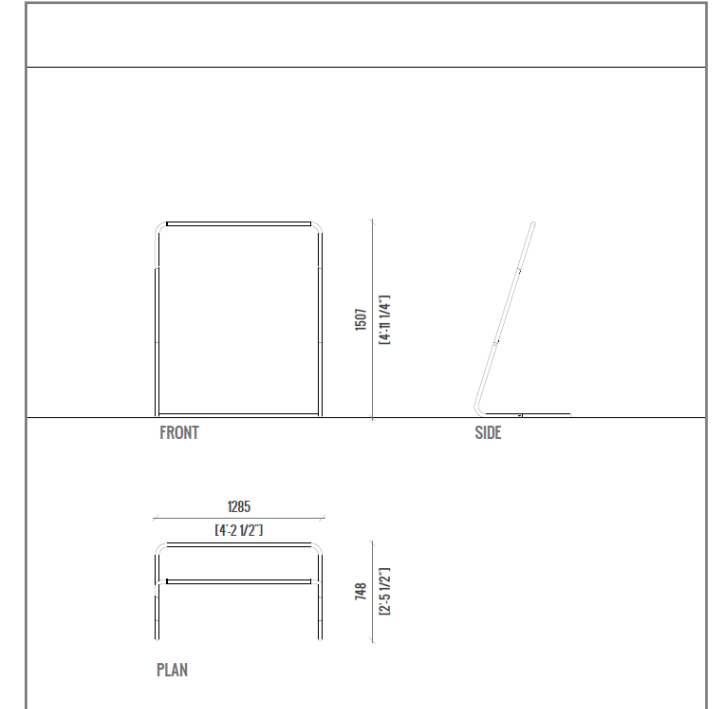
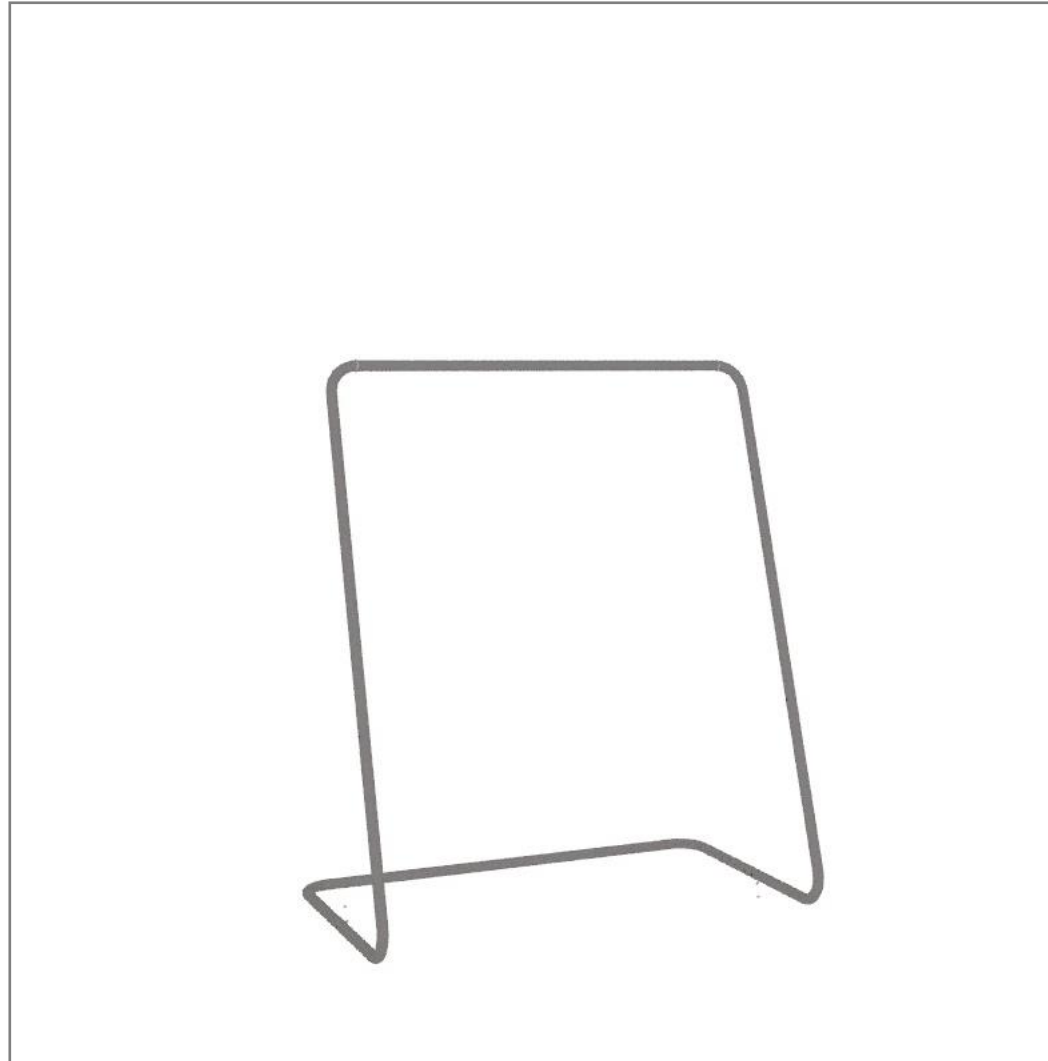
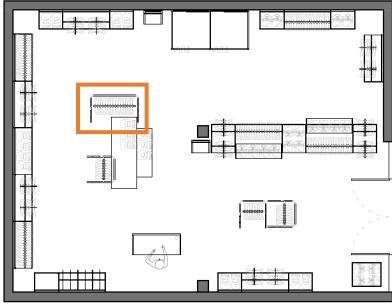
- 1 x Table H27'' 9/16 W74'' 51/64 D26'' 49/64
- 1 x Table H15'' 3/4 W50'' 25/32 D26'' 49/64
- 1 x Table Top W74'' 51/64 D26'' 49/64
- 1 x Table Top W50'' 25/32 D26'' 49/64
- 1 x Mini Rack W24'' H59''

CAPACITY

- Folded: 100
- Hanging: 8

Freestanding 07

Regular rack 59"

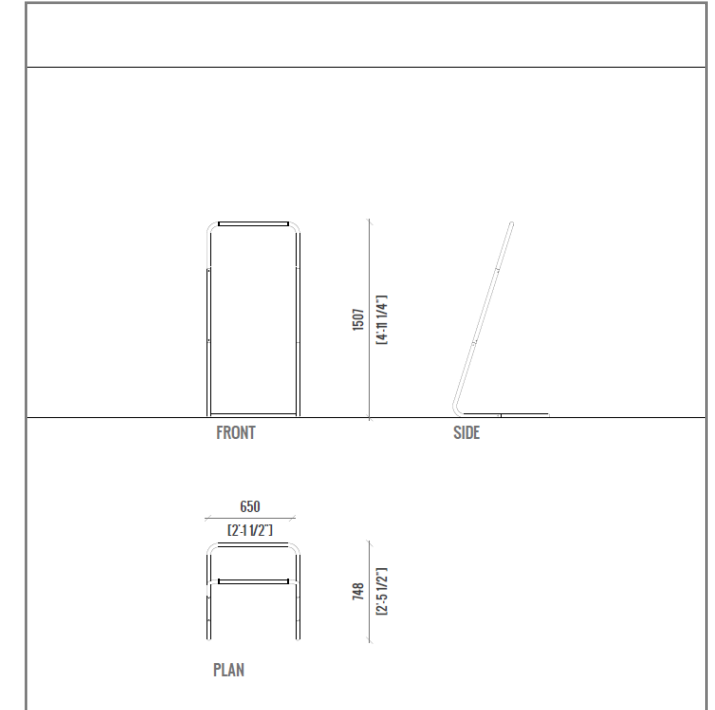
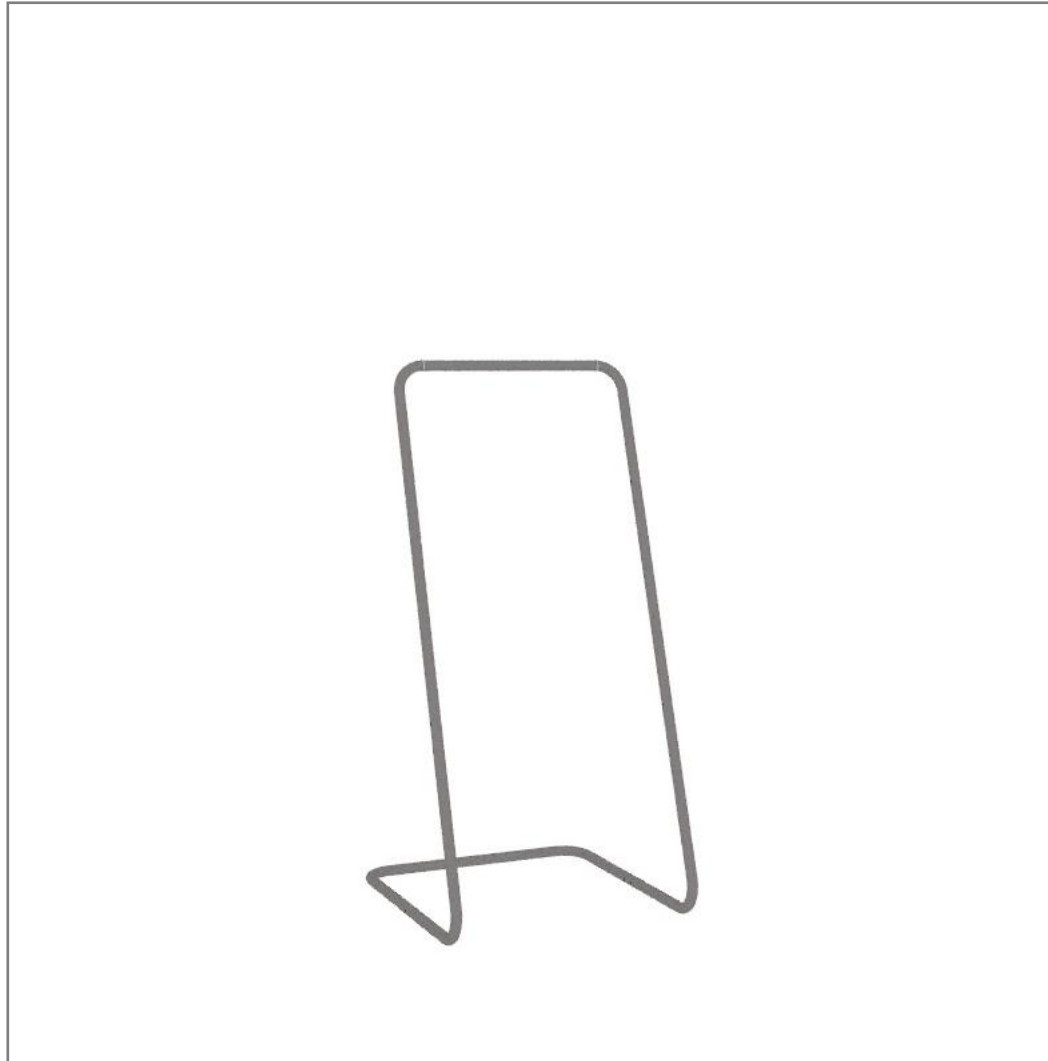
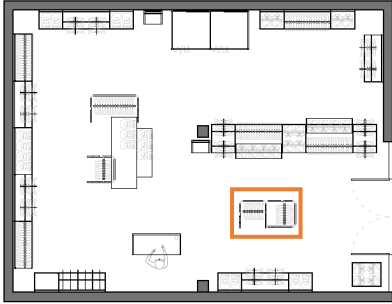


CODES
1 x Rack W48" H59"

CAPACITY
Folded: 00
Hanging: 16

Freestanding 08

Mini rack 59"

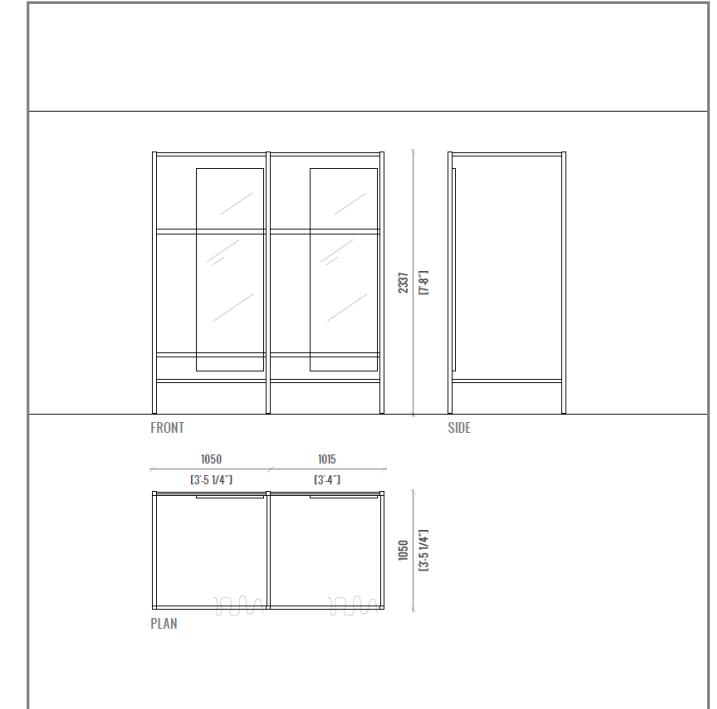
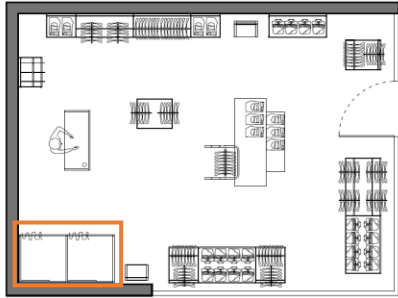


CODES
1 x Rack W24" H59"

CAPACITY
Folded: 00
Hanging: 8

Fitting room

Modular Fitting room. 2 modules

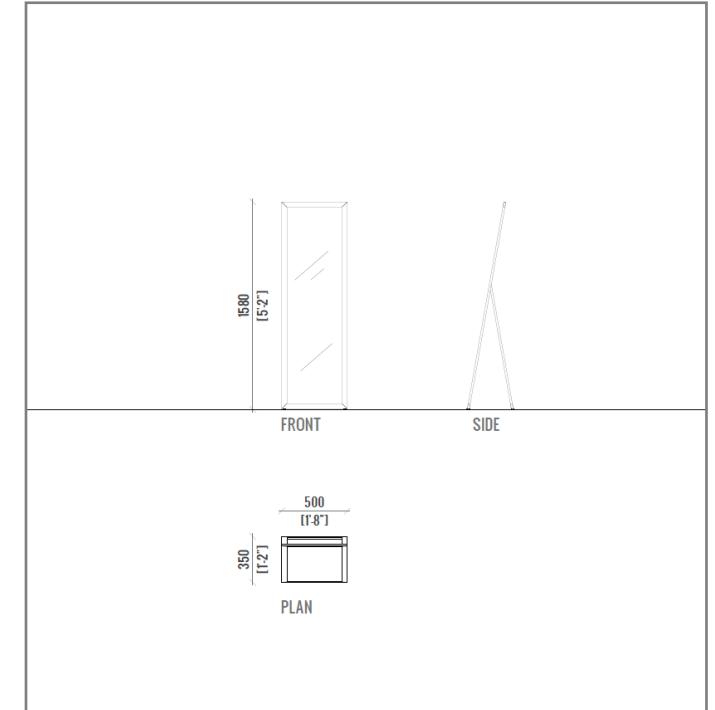
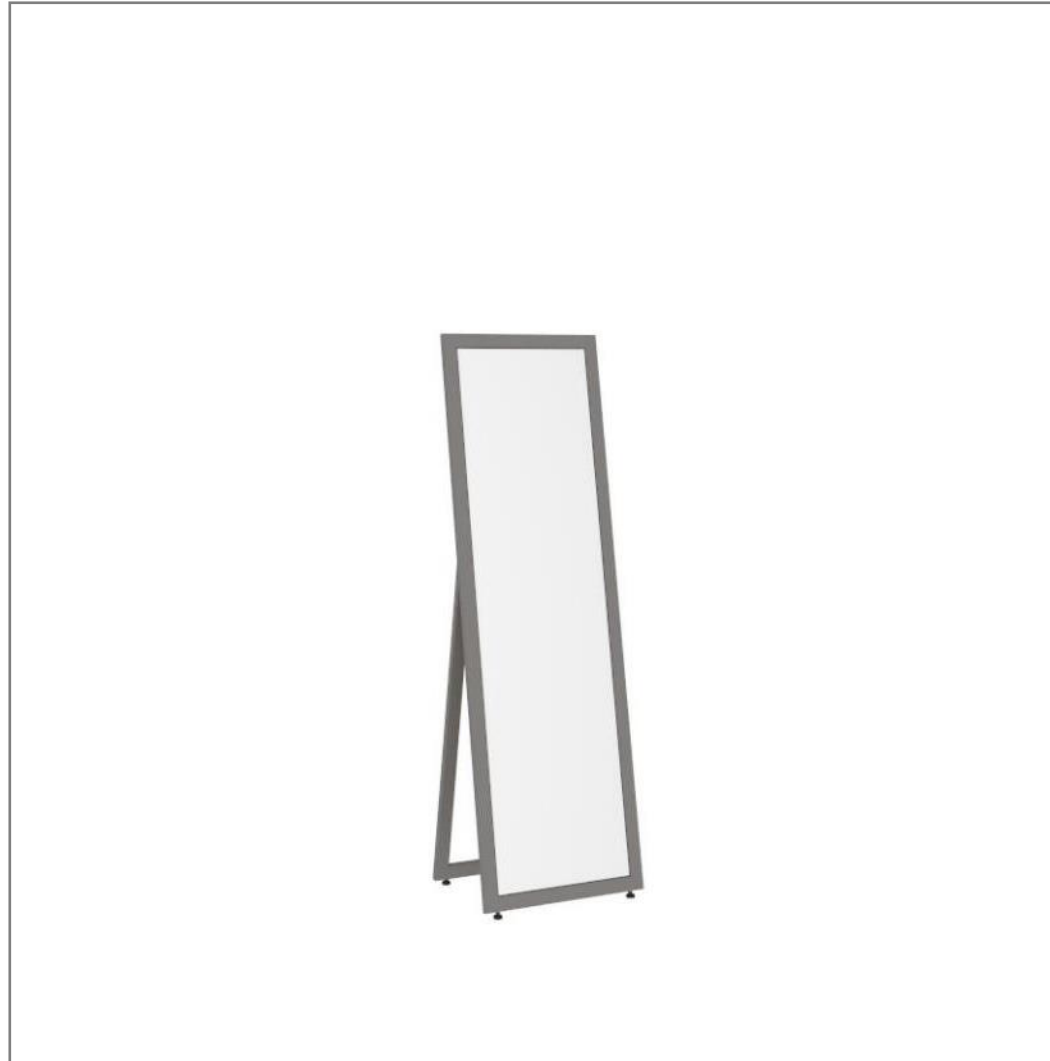
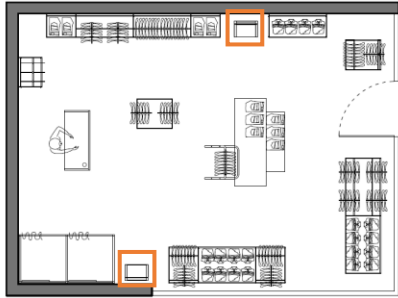


CODES

- 1 x Fitting Room H95" W1050 D1050
- 1 x Extension H95" W1015 D1050
- 2 x Mirror
- 2 x Curtains Set

Mirror

Freestanding mirror

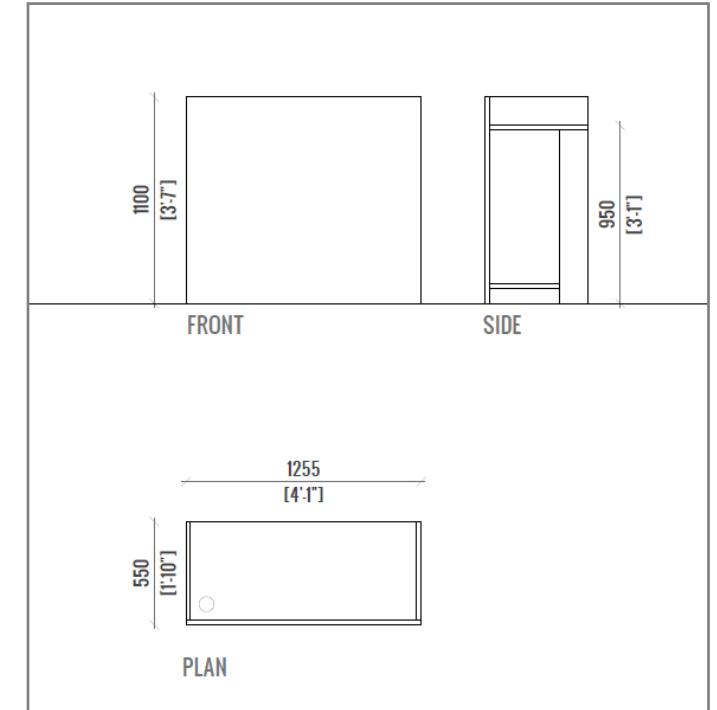
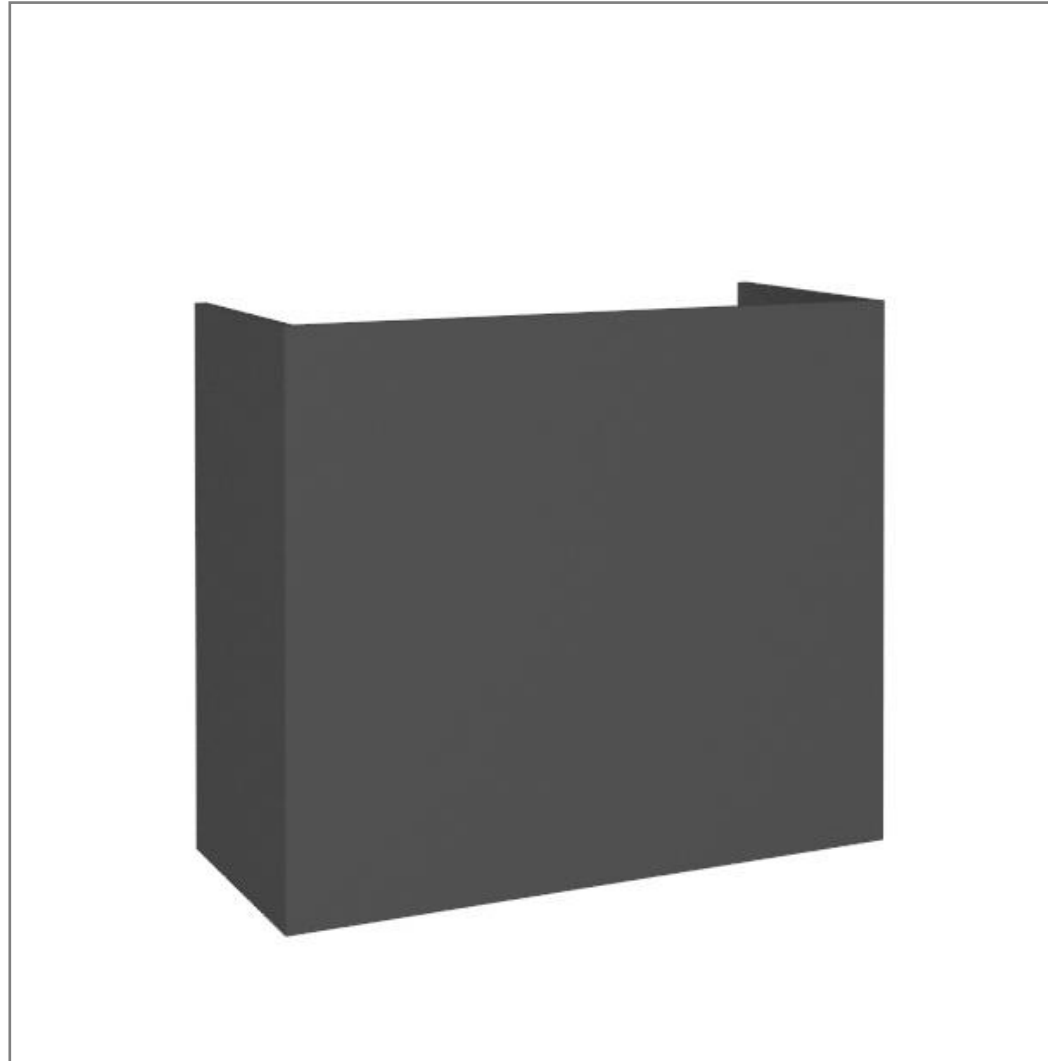
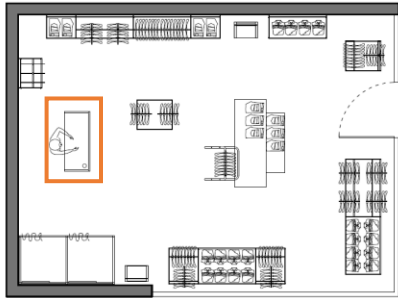


CODES

1 x Mirror H62" 13/64 W19" 11/16 D13" 25/32

Cash desk

Modular desk in graphite gray melamine. 1 module



FEATURES

1 x Cash Desk H43" 5/16 W49" 13/32 D21" 21/32
(Melamine Chipboard)

#5 Apparel and accessories.

200 sqm / 2153 sqft



POPUP

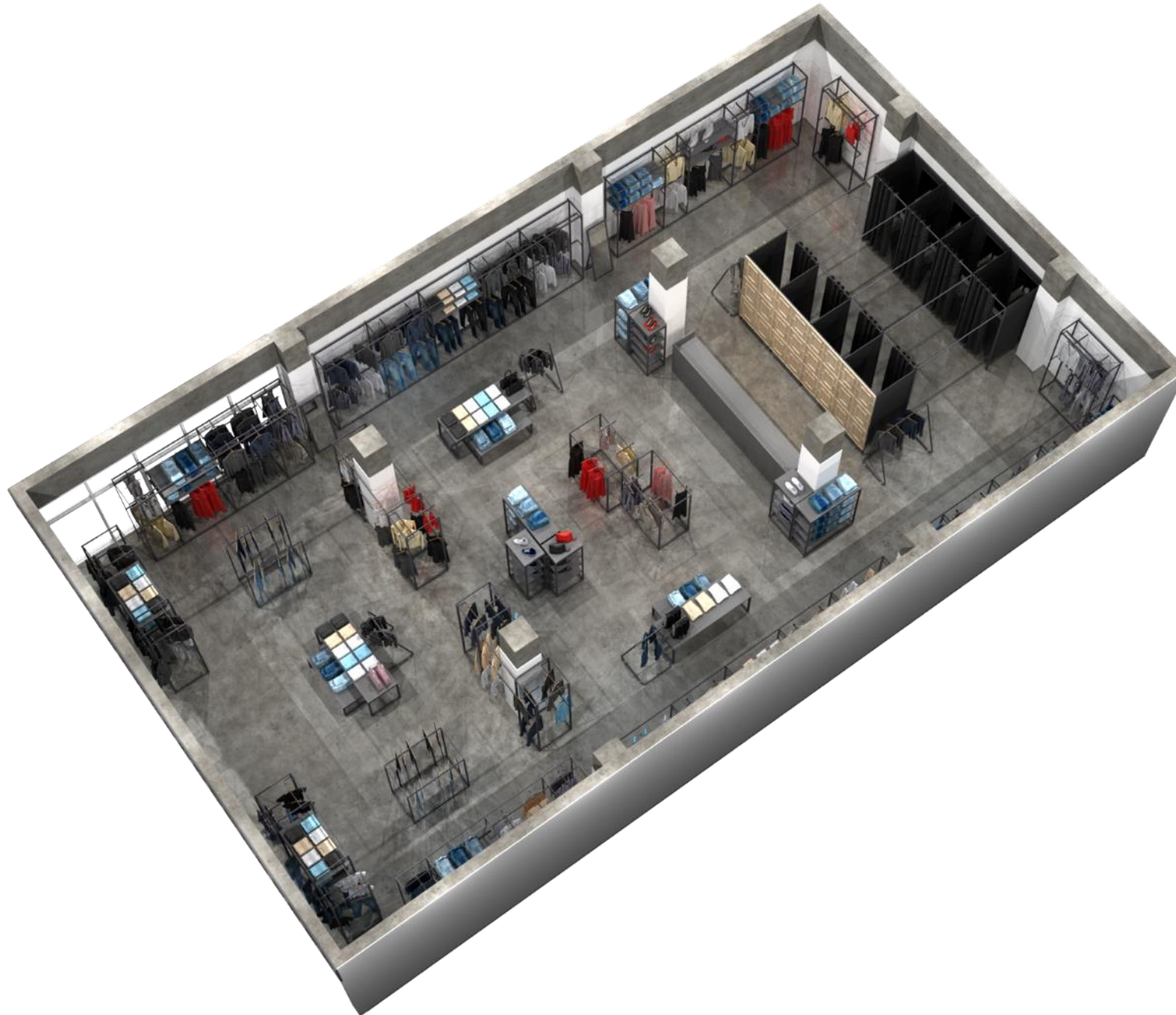


POPUP

Designed to be quick and easy to install, ALU adaptable fixtures are made for fast-paced retailers. Flexible and reconfigurable, our systems maximize your pop-up store potential.

With a space of 2153 sqft / 200 Sqm, the shop is fitted to display a total of:

- 1220 folded items,
- 1420 hanged items,
- 8 Fitting rooms,
- 1 big cash desk



\$ 32 / sqft

Price can vary according to fixtures density. Pricing is based on the layout proposed: includes fixtures, wooden shelves, Fitting rooms, mirrors and cash desk.









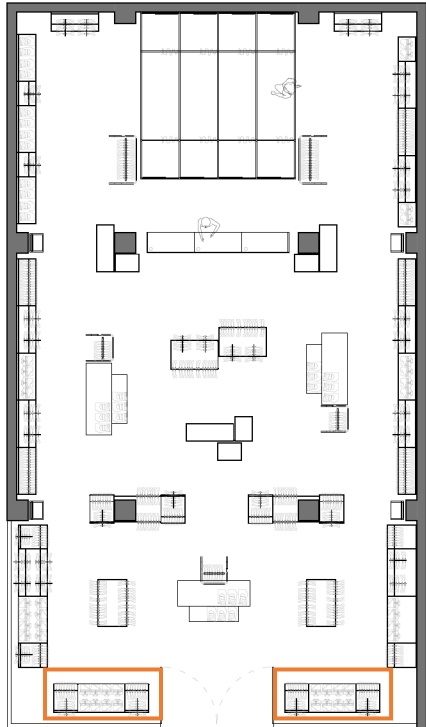
Plan «Apparel and accessories»

200 sqm/2153 sqft



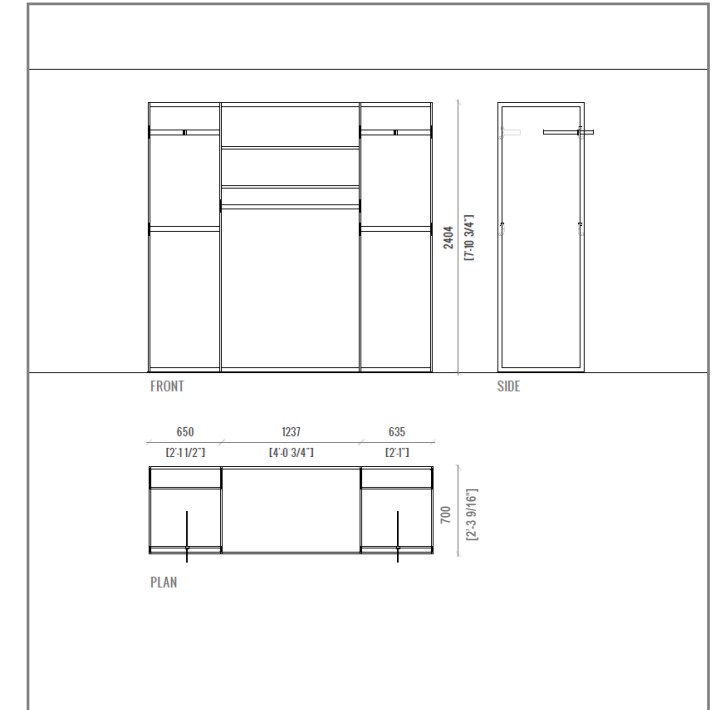
Configuration 06

Vertical unit 24'' + extensions 48''/24''



CODES

- 1 x Unit H95'' W25'' 19/32 D 27'' 9/16
- 1 x Extension H95'' W49'' 1/64 D 27'' 9/16
- 1 x Extension H95'' W25'' D 27'' 9/16
- 6 x Crossbar W24''
- 2 x Crossbar W48''
- 2 x Crossbar Cantilever W24''
- 2 x Faceout
- 2 x Full Shelf Holder (set of 2)
- 2 x Wood Shelf W48'' (Melamine Chipboard)

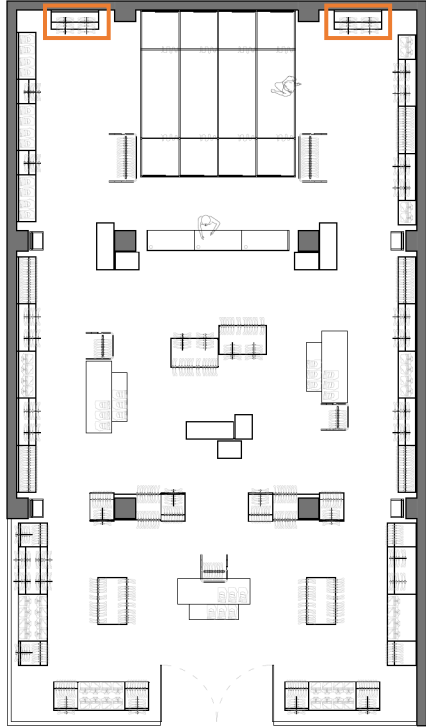


CAPACITY

- Folded: 80
- Hanging: 110

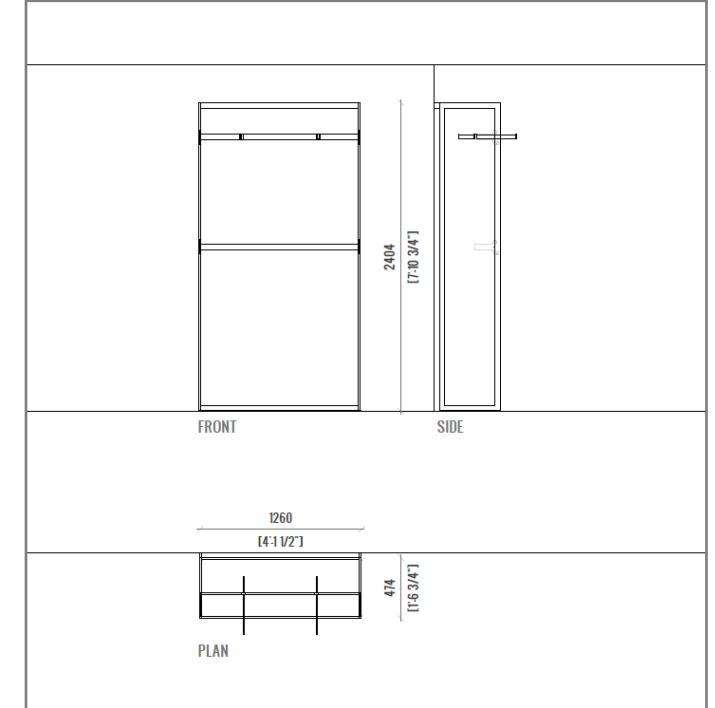
Configuration 09

Wall mounted 48"



CODES

- 1 x Unit H95" W49" 5/8 D18" 57/64
- 2 x Crossbar Cantilever W48"
- 2 x Faceout

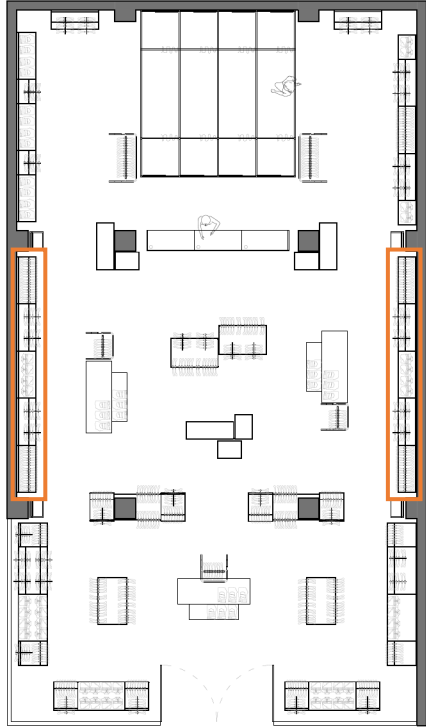


CAPACITY

- Folded: 00
- Hanging: 30

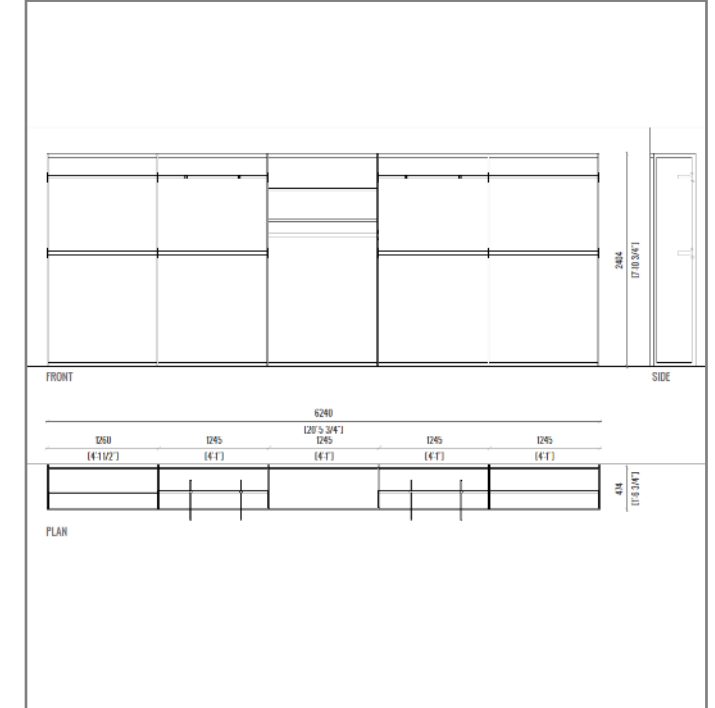
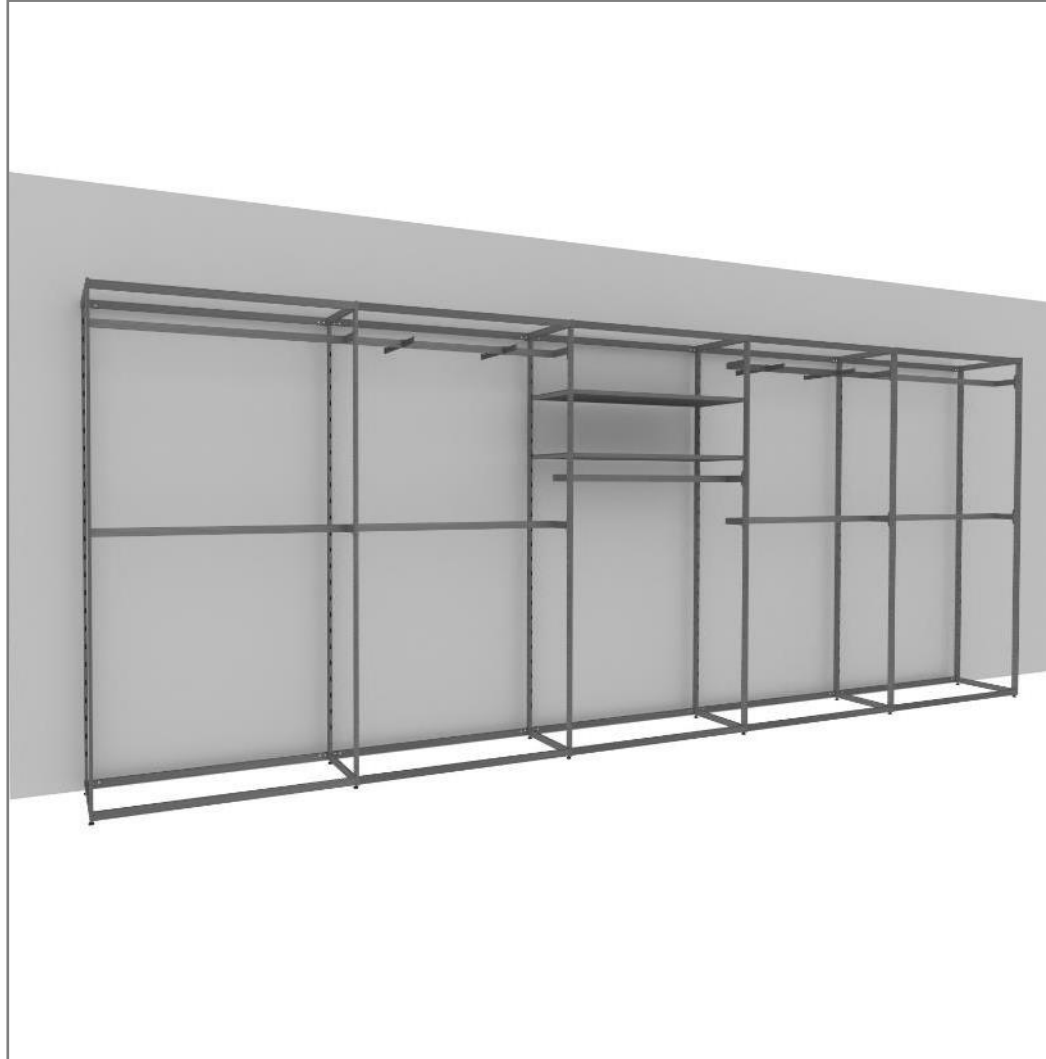
Configuration 15

Wall mounted 48" + extension 48"



CODES

- 1 x Unit H95" W49" 5/8 D18" 57/64
- 4 x Extension H95" W49" 1/64 D18" 57/64
- 9 x Crossbar Cantilever W48"
- 2 x Full Shelf Holder (set of 2)
- 2 x Wood Shelf W48" (Melamine Chipboard)
- 4 x Faceout

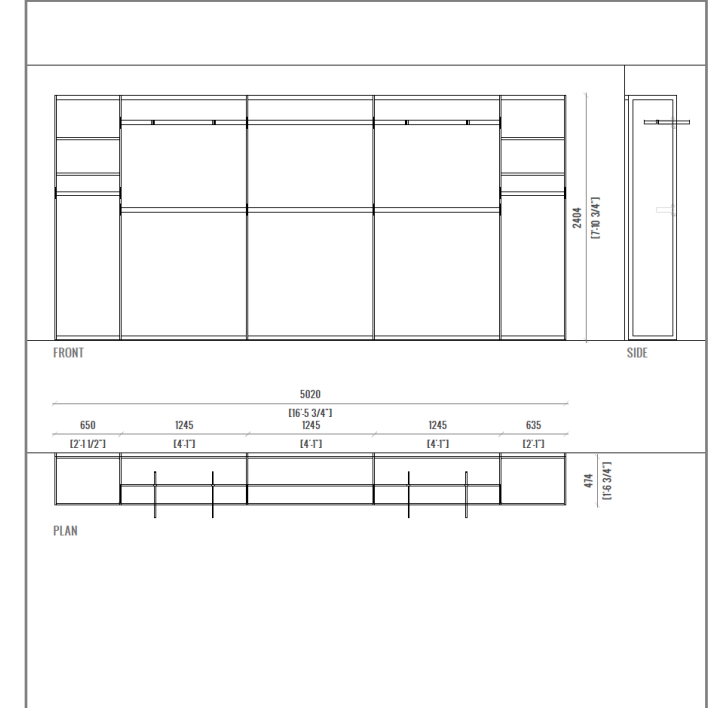
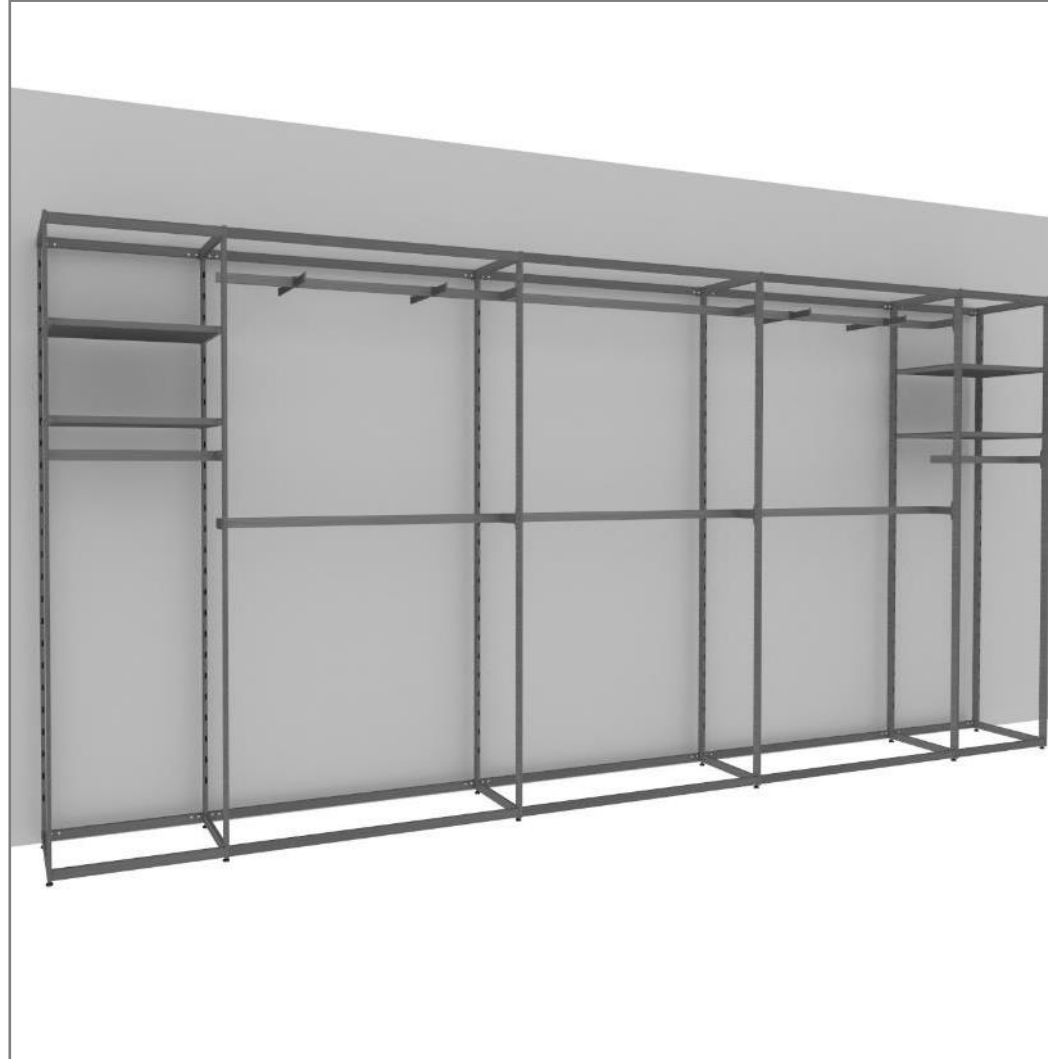
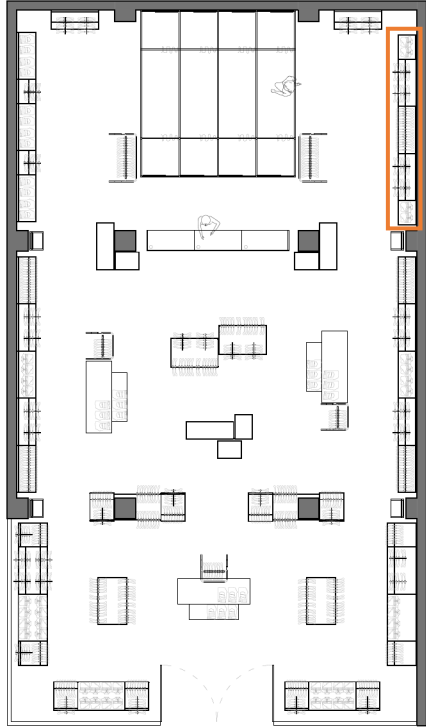


CAPACITY

- Folded: 40
- Hanging: 160

Configuration 23

Wall mounted 24'' + extensions 48''/24''



CODES

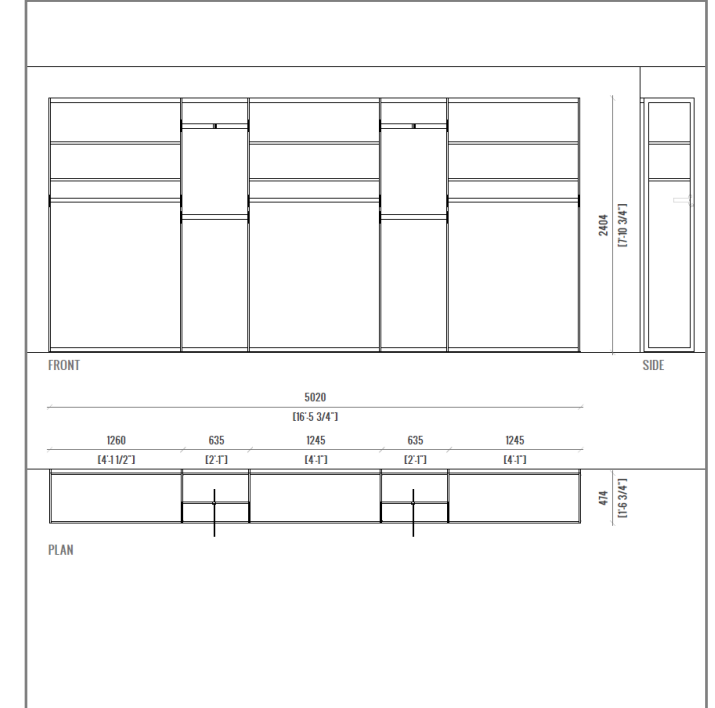
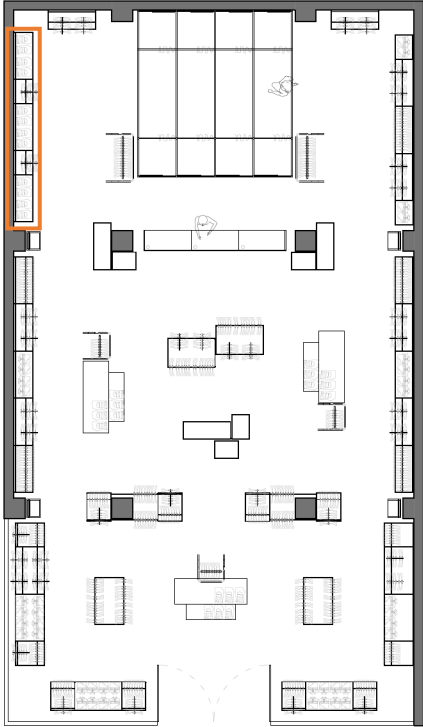
- 1 x Unit H95'' W25'' 19/32 D18'' 57/64
- 3 x Extension H95'' W49'' 1/64 D18'' 57/64
- 1 x Extension H95'' W25'' D18'' 57/64
- 2 x Crossbar Cantilever W24''
- 6 x Crossbar Cantilever W48''
- 4 x Full Shelf Holder (set of 2)
- 4 x Wood Shelf W24'' (Melamine Chipboard)
- 4 x Faceout

CAPACITY

- Folded: 40
- Hanging: 120

Configuration 24

Wall mounted 48" + extensions 24"/48"



CODES

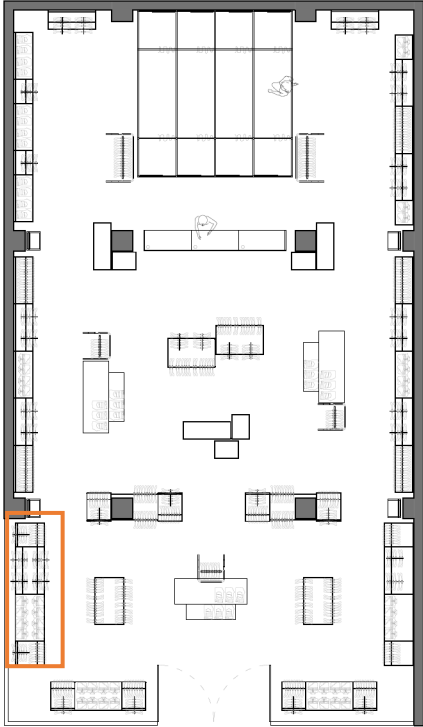
- 1 x Unit H95" W49" 5/8 D18" 57/64
- 2 x Extension H95" W49" 1/64 D18" 57/64
- 2 x Extension H95" W25" D18" 57/64
- 4 x Crossbar Cantilever W24"
- 3 x Crossbar Cantilever W48"
- 6 x Full Shelf Holder (set of 2)
- 6 x Wood Shelf W48" (Melamine Chipboard)
- 2 x Faceout

CAPACITY

- Folded: 120
- Hanging: 90

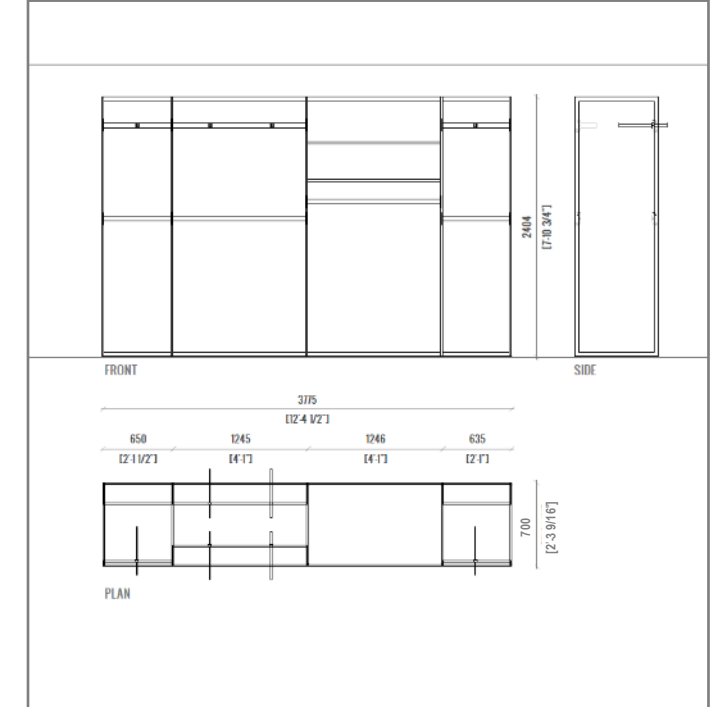
Configuration 25

Vertical unit 24'' + extensions 48''/ 24''



CODES

- 1 x Unit H95'' W25'' 19/32 D 27'' 9/16
- 2 x Extension H95'' W49'' 1/64 D 27'' 9/16
- 1 x Extension H95'' W25'' D 27'' 9/16
- 4 x Crossbar W24''
- 4 x Crossbar W48''
- 4 x Crossbar Cantilever W24''
- 2 x Crossbar Cantilever W48''
- 2 x Full Shelf Holder (set of 2)
- 2 x Wood Shelf W48'' (Melamine Chipboard)
- 8 x Faceout

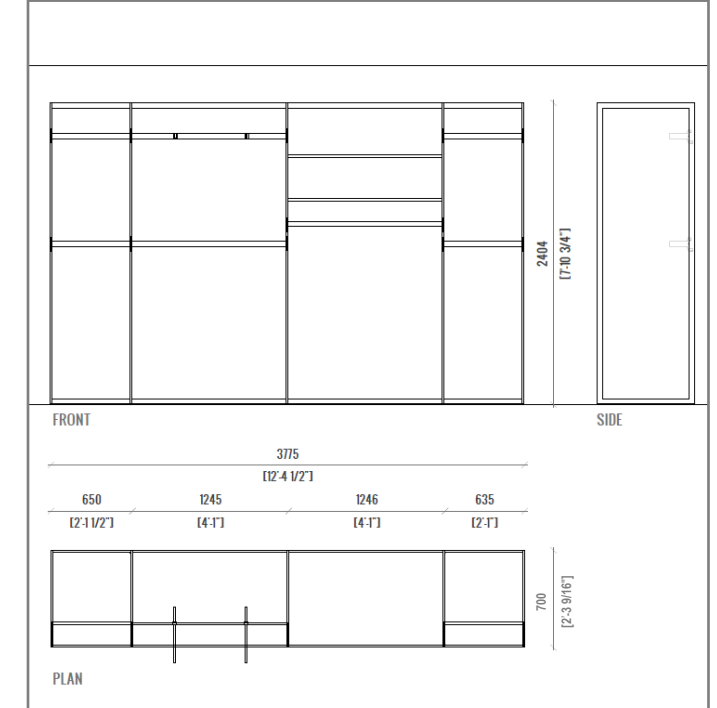
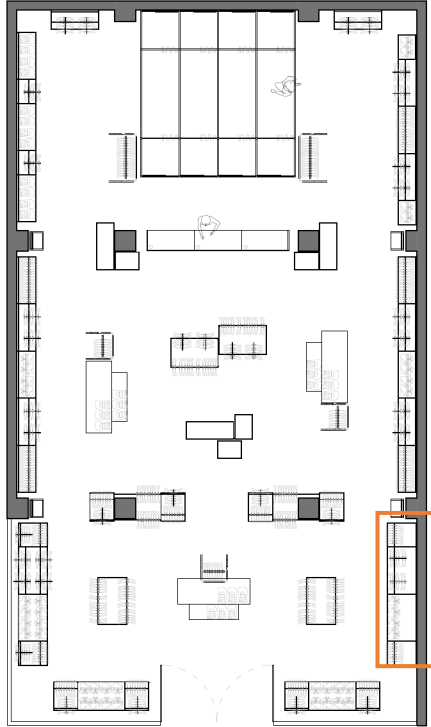


CAPACITY

- Folded: 80
- Hanging: 170

Configuration 26

Vertical unit 24'' + extensions 48''/ 24''



CODES

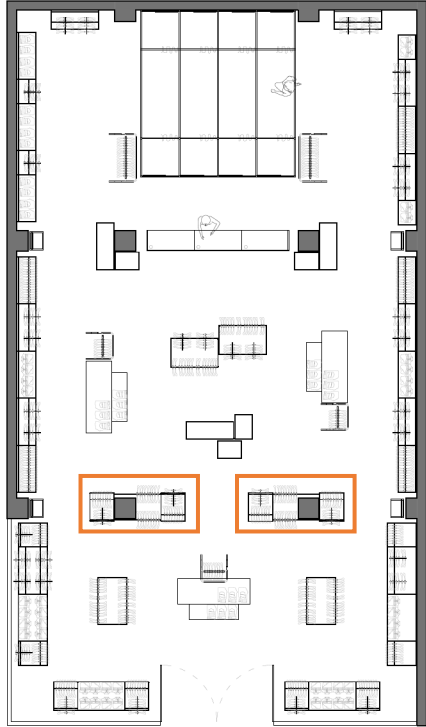
- 1 x Unit H95'' W25'' 19/32 D 27'' 9/16
- 2 x Extension H95'' W49'' 1/64 D 27'' 9/16
- 1 x Extension H95'' W25'' D 27'' 9/16
- 2 x Crossbar W48''
- 4 x Crossbar Cantilever W24''
- 2 x Crossbar Cantilever W48''
- 2 x Full Shelf Holder (set of 2)
- 2 x Wood Shelf W48'' (Melamine Chipboard)
- 6 x Faceout

CAPACITY

- Folded: 80
- Hanging: 90

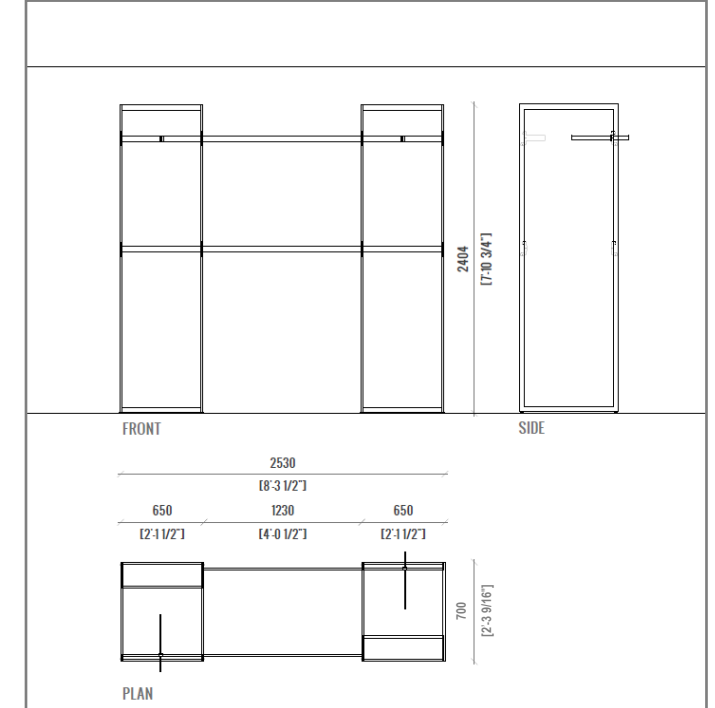
Configuration 27

Vertical unit 24" + bridge 48"



CODES

2 x Unit H95" W25" 19/32 D 27" 9/16
4 x Crossbar W48"
6 x Crossbar W24"
2 x Crossbar Cantilever W24"
2 x Faceout

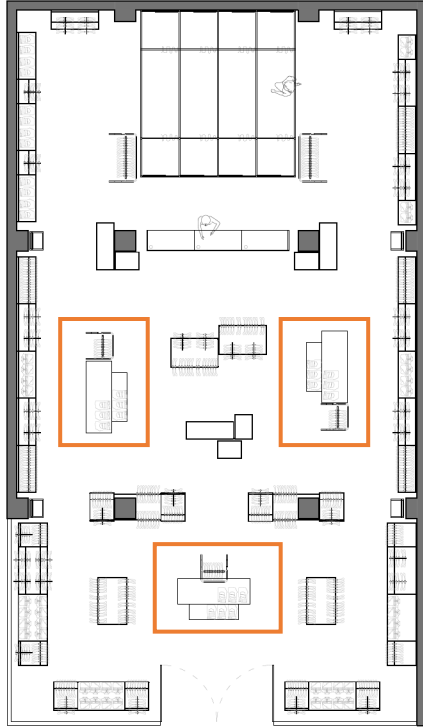


CAPACITY

Folded: 00
Hanging: 150

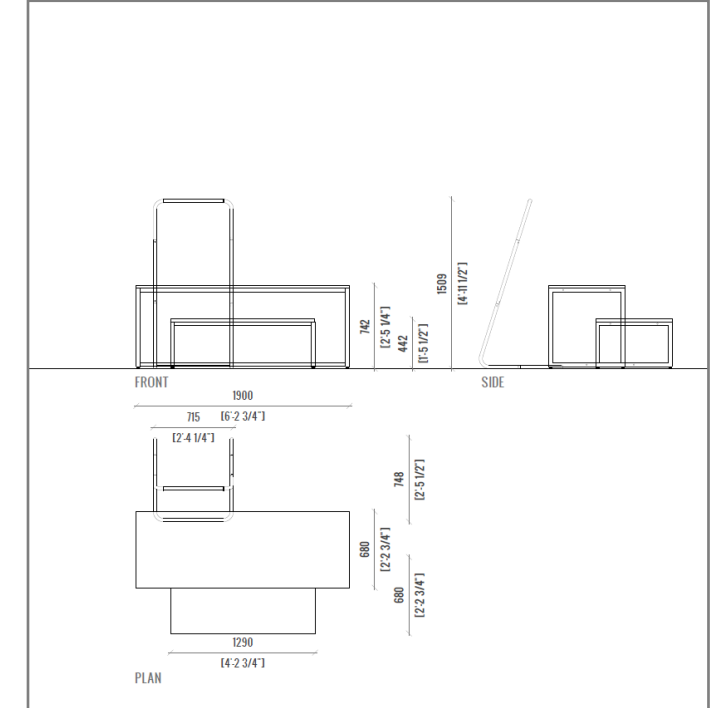
Freestanding 01

TQ Table H28" + TQ Table H16" + Mini rack 59"



CODES

- 1 x Table H27" 9/16 W74" 51/64 D26" 49/64
- 1 x Table H15" 3/4 W50" 25/32 D26" 49/64
- 1 x Table Top W74" 51/64 D26" 49/64
- 1 x Table Top W50" 25/32 D26" 49/64
- 1 x Mini Rack W24" H59"

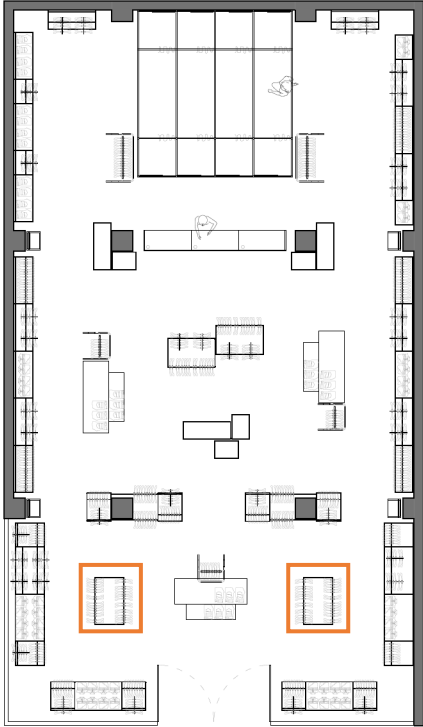


CAPACITY

- Folded: 100
- Hanging: 8

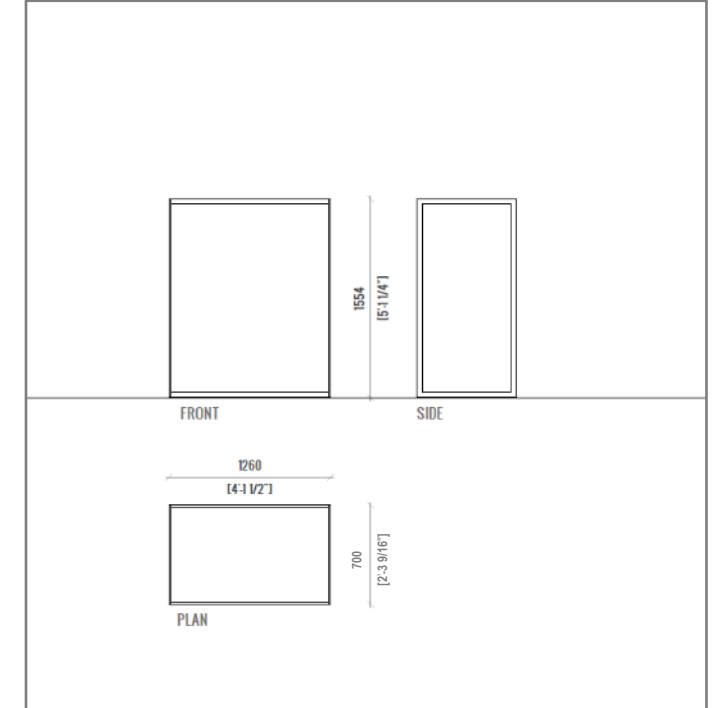
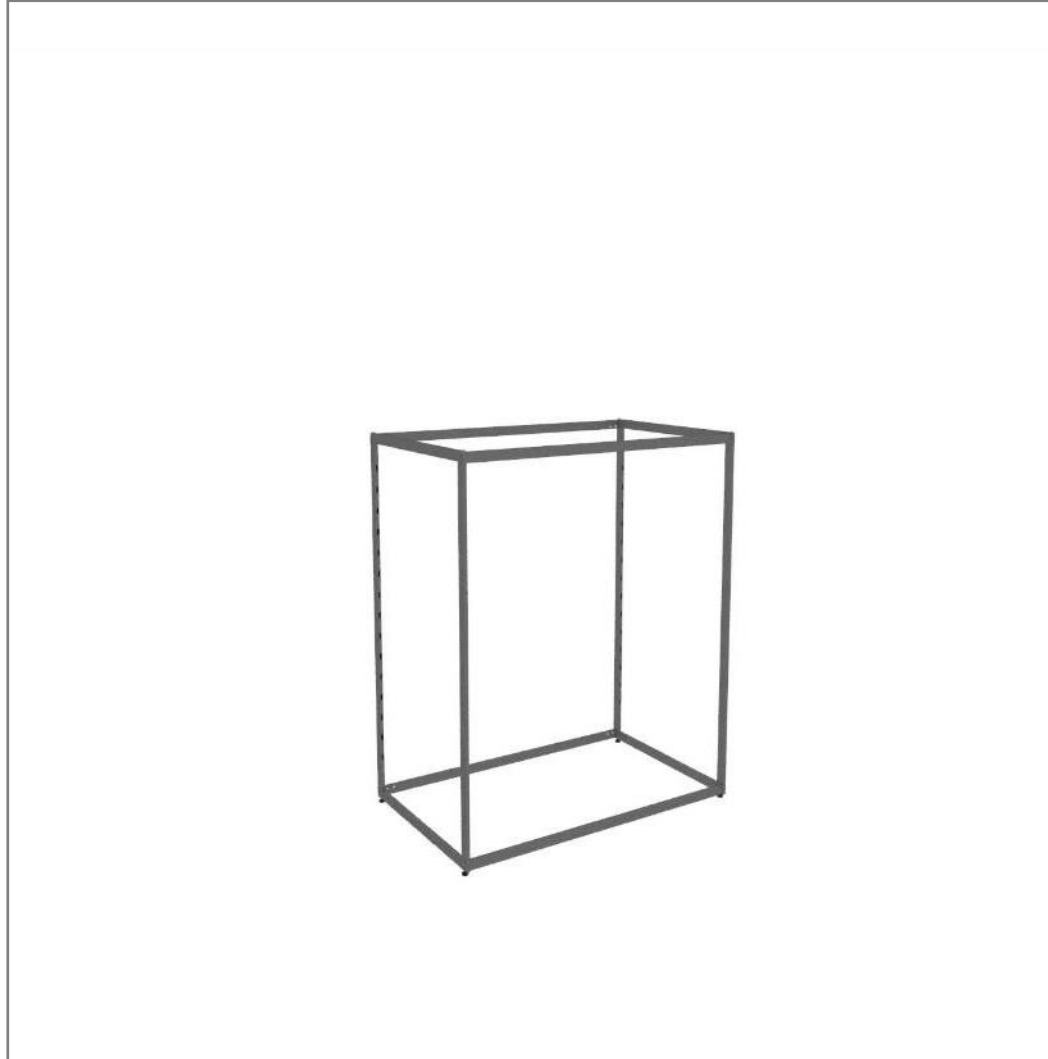
Freestanding 05

Prisma 48"x61"



CODES

1 x Unit H61" 1/32 W49" 5/8 D 27" 9/16



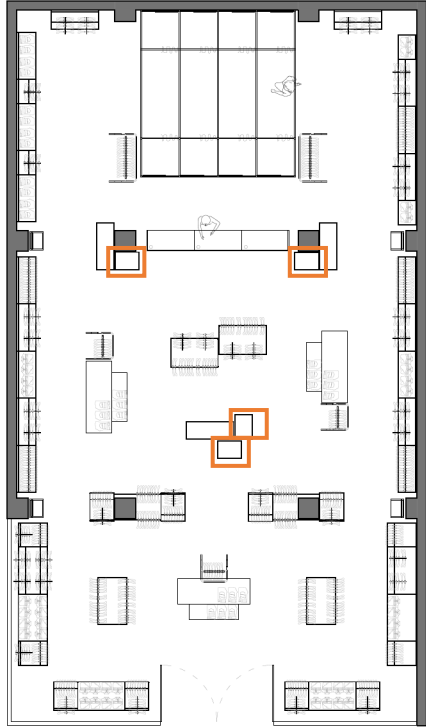
CAPACITY

Folded: 00

Hanging: 40

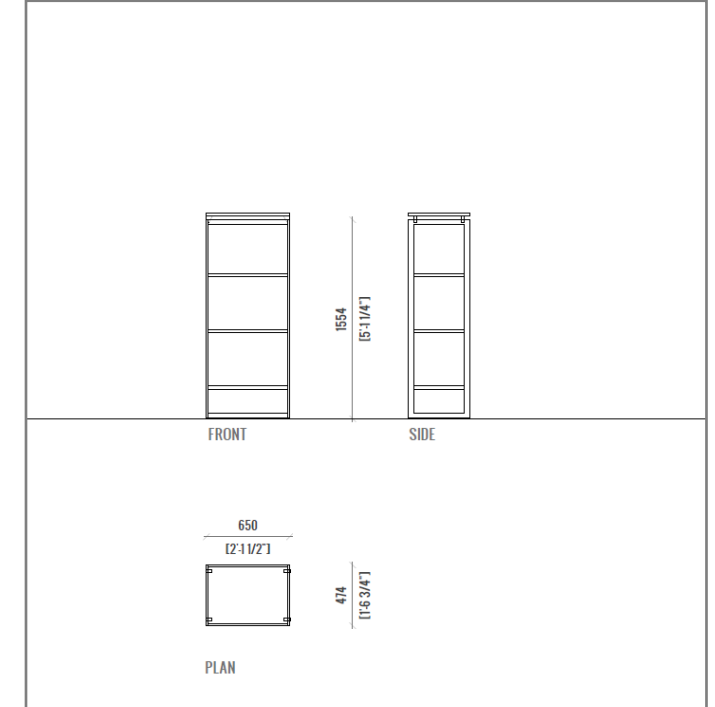
Freestanding 06

Small prisma 24"x61"



CODES

- 1 x Unit H61" 1/32 W25" 19/32 D18" 57/64
- 3 x Full Shelf Holder (set of 2)
- 3 x Wood Shelf W24" (Melamine Chipboard)
- 2 x Accessory Support (set of 2)
- 1 x Wood Top Shelf W24" (Melamine Chipboard)

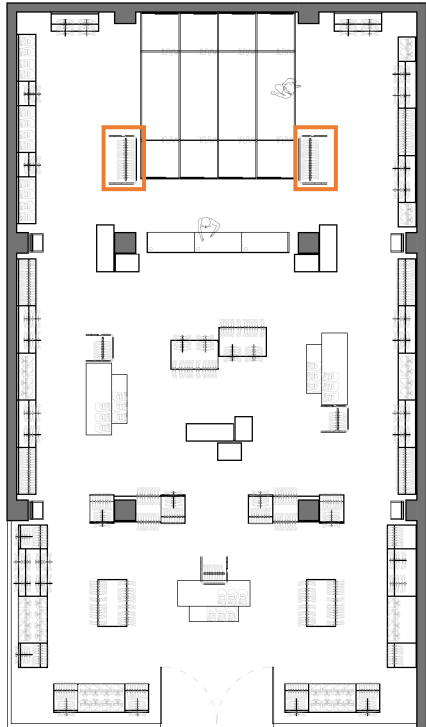


CAPACITY

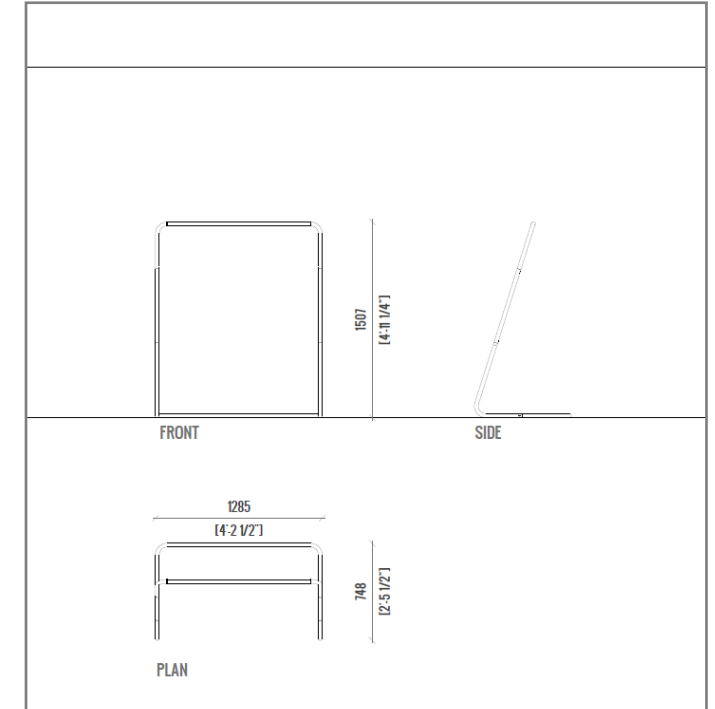
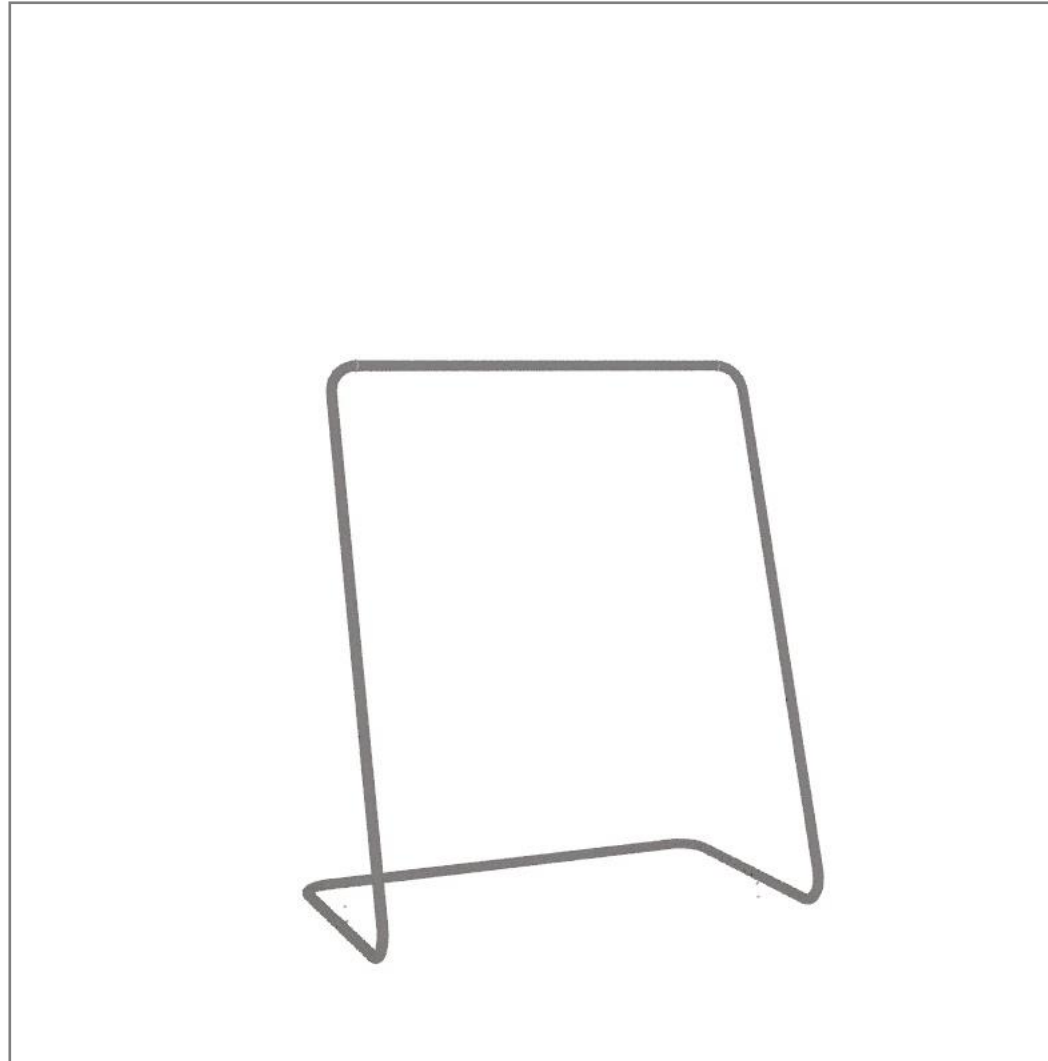
- Folded: 40
- Hanging: 00

Freestanding 07

Regular rack 59"



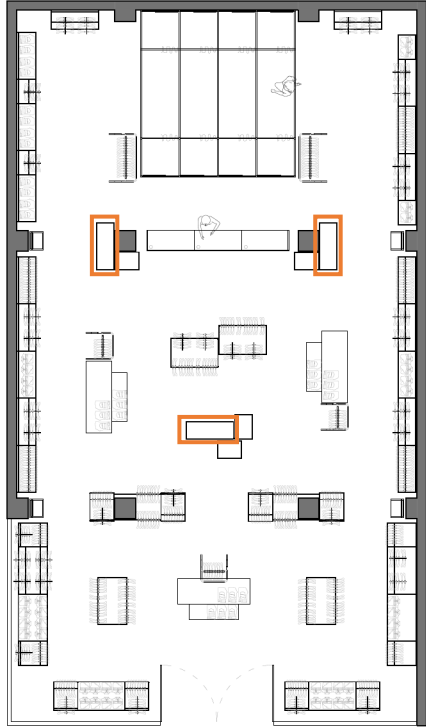
CODES
1 x Rack W48" H1500



CAPACITY
Folded: 00
Hanging: 16

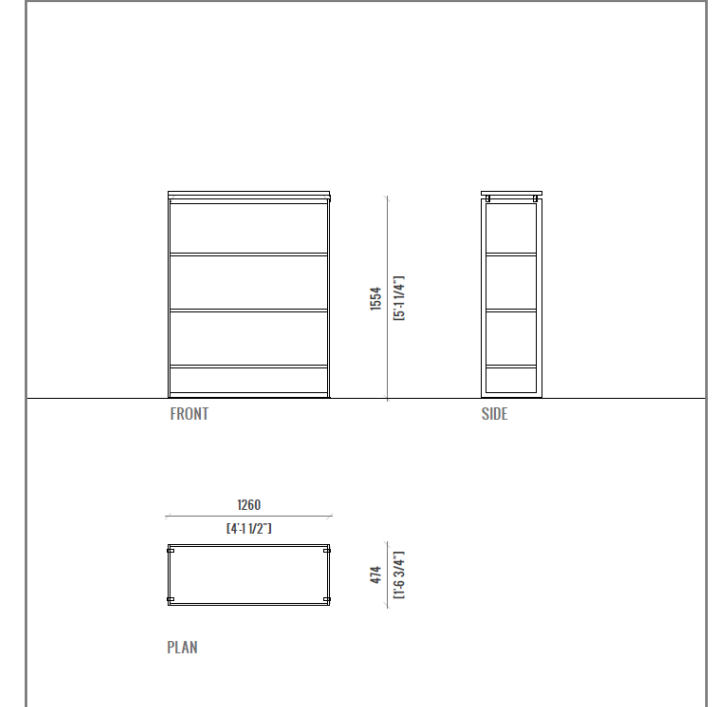
Freestanding 09

Small prisma 48"x61"



CODES

- 1 x Unit H61" 1/32 W49" 5/8 D18" 57/64
- 3 x Full Shelf Holder (set of 2)
- 3 x Wood Shelf W48" (Melamine Chipboard)
- 2 x Accessory Support (set of 2)
- 1 x Wood Top Shelf W48" (Melamine Chipboard)

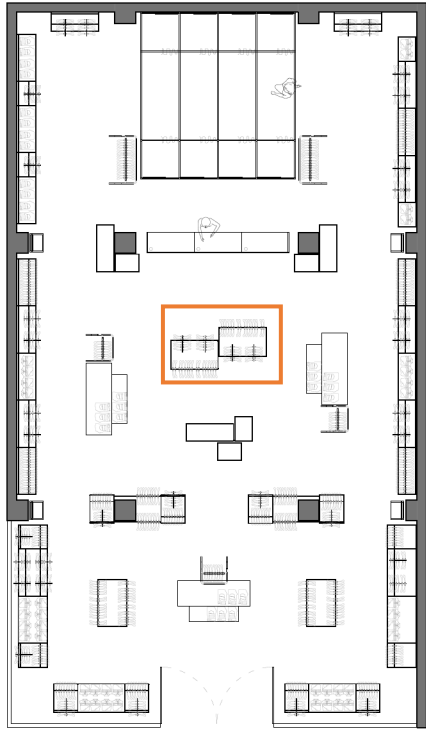


CAPACITY

- Folded: 80
- Hanging: 00

Freestanding 10

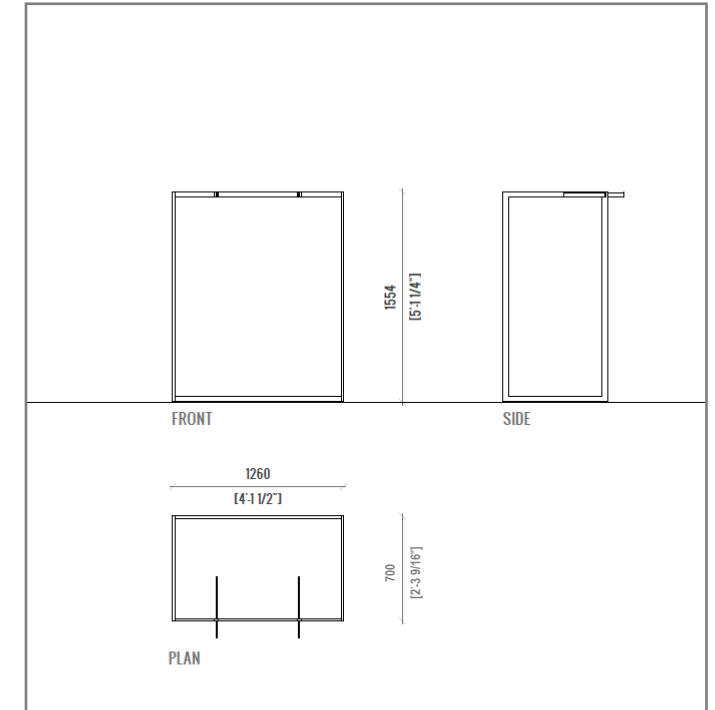
Prisma 48"x61"



CODES

1 x Unit H61" 1/32 W49" 5/8 D 27" 9/16

2 x Faceout



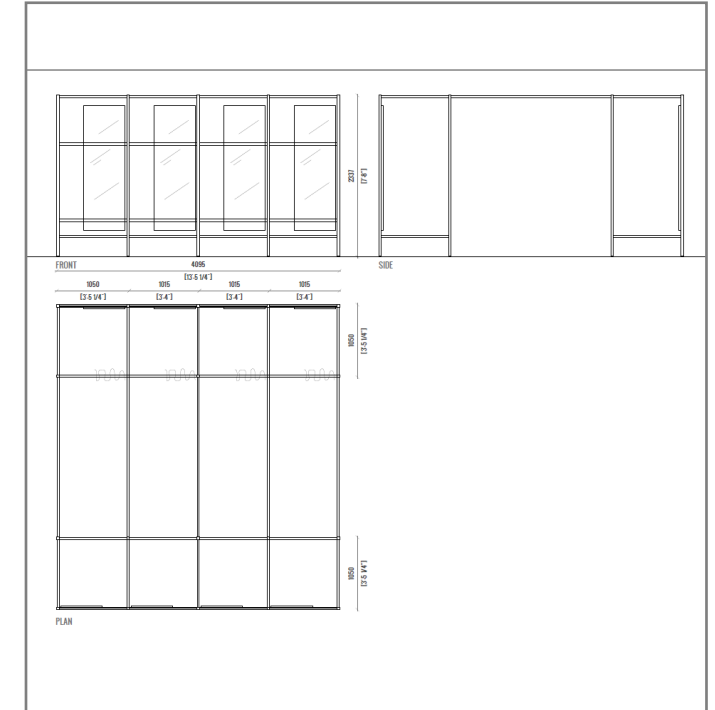
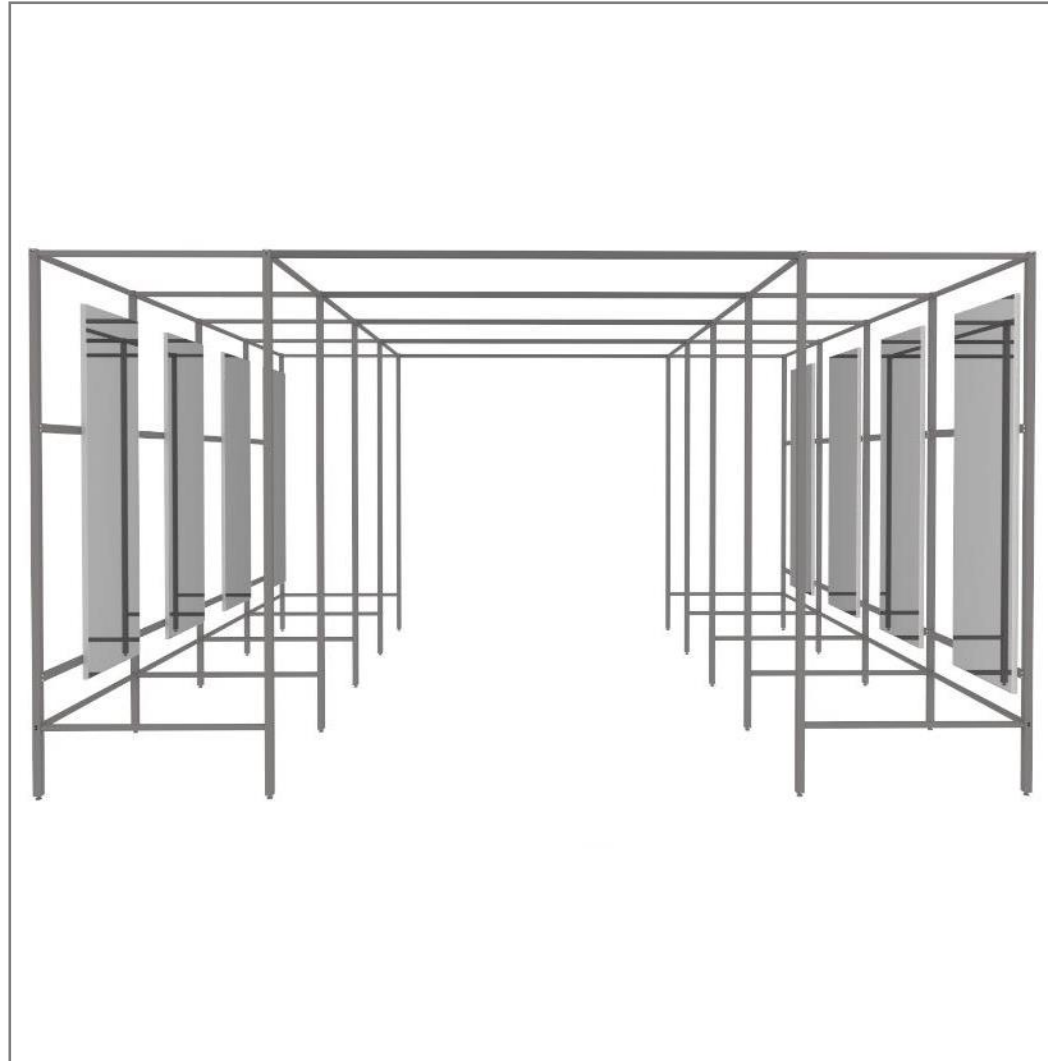
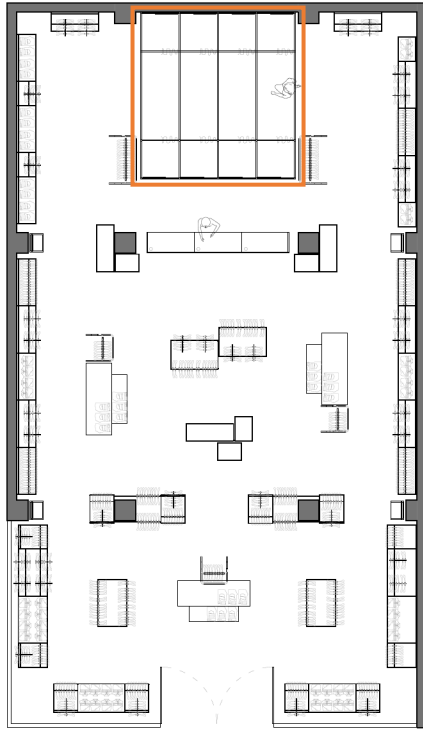
CAPACITY

Folded: 00

Hanging: 30

Fitting room

Modular Fitting room. 8 modules with bridge



CODES

2 x Fitting Room H95" W41" 11/32 D41" 11/32

6 x Extension H95" W39" 61/64 D41" 11/32

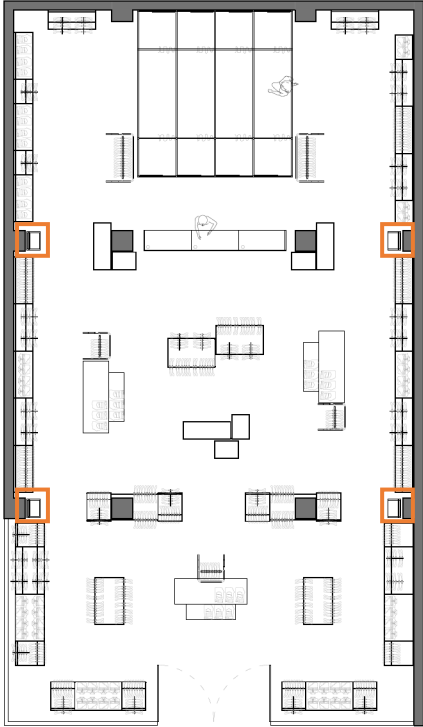
8 x Mirror

8 x Curtains Set

5 x Connecting Tubes

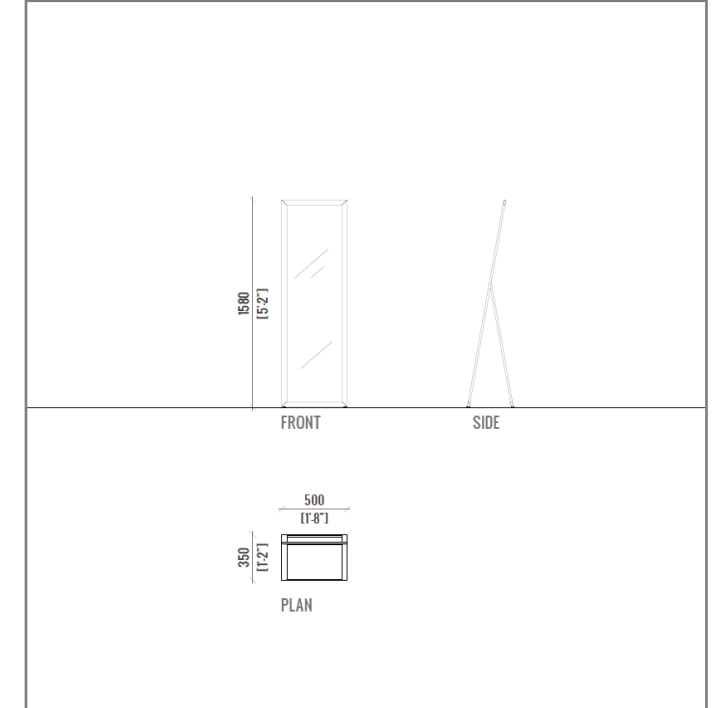
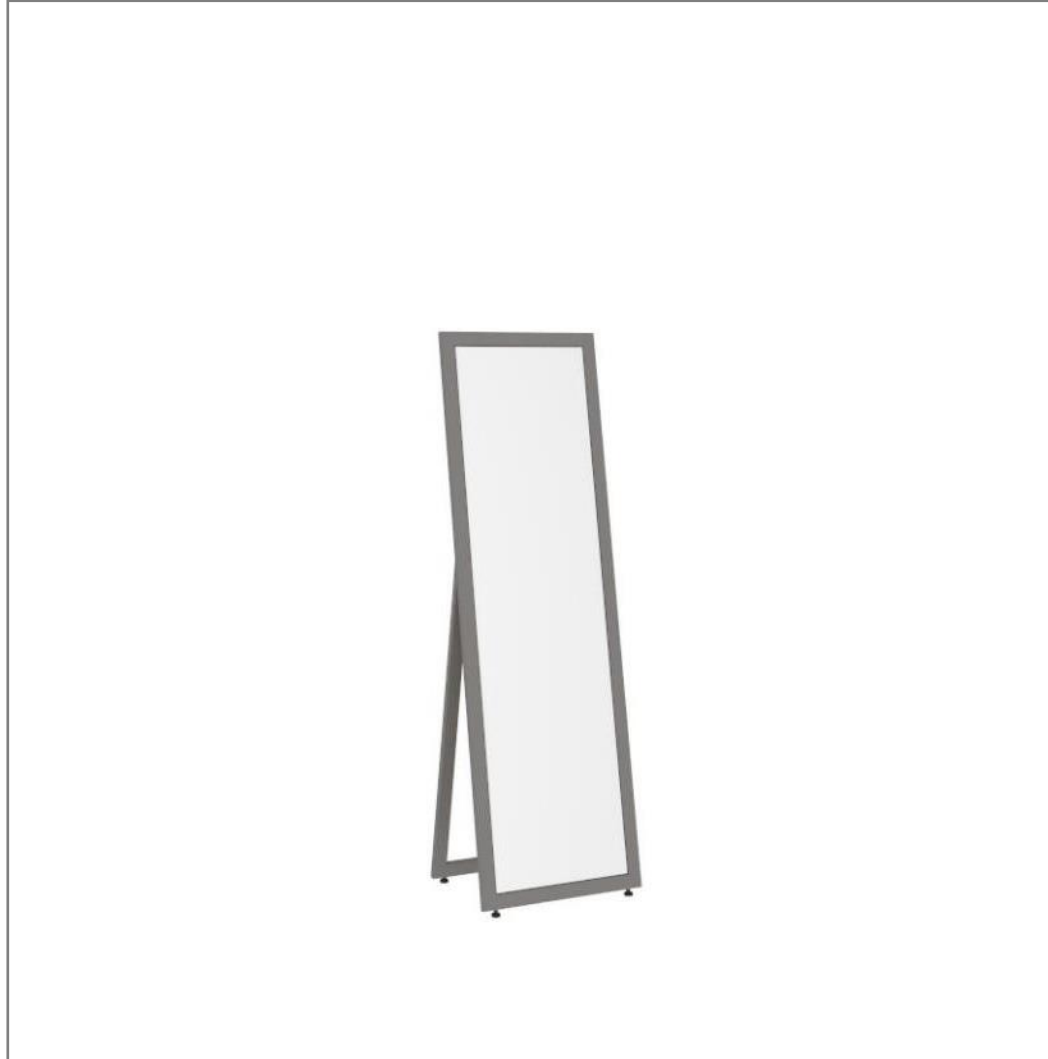
Mirror

Freestanding mirror



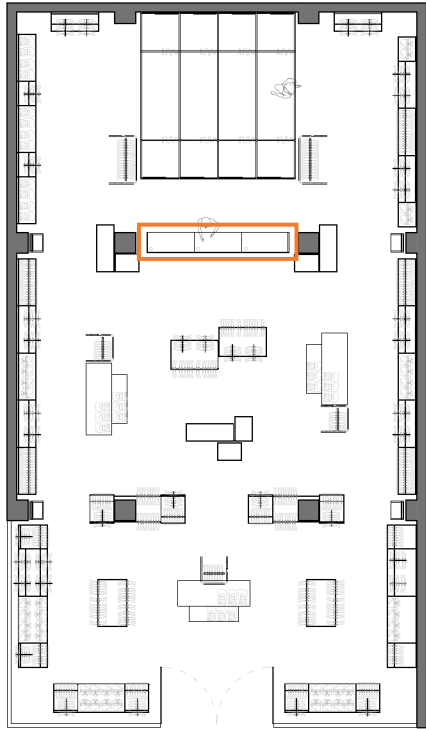
CODES

1 x Mirror H62" 13/64 W19" 11/16 D13" 25/32



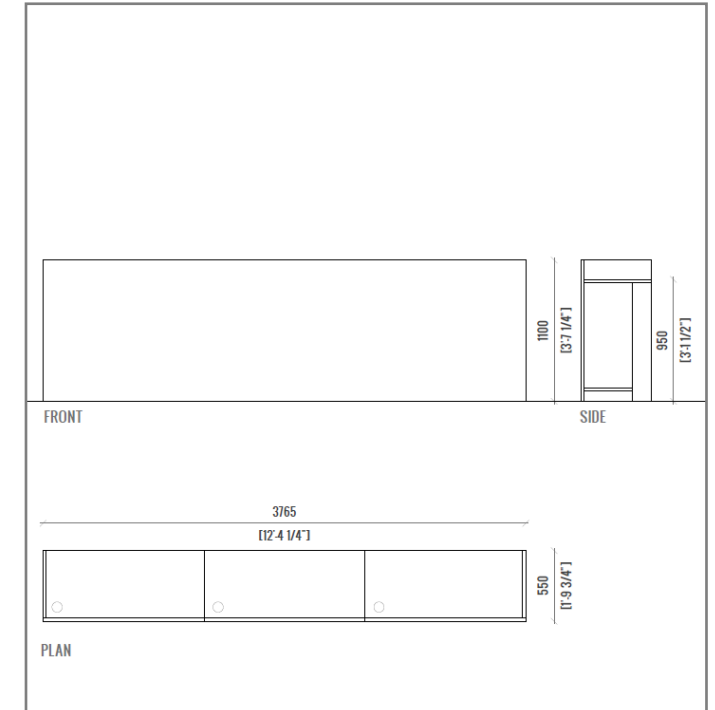
Cash desk

Modular desk in graphite gray melamine. 3 modules



FEATURES

3 x Cash Desk H43" 5/16 W49" 13/32 D21" 21/32
(Melamine Chipboard)



Contacts

ALU HQ

Via Commercio 22, 36060, Romano d'Ezzelino (VI), Italy

ALU Inc. USA & Canada

11 Mayfield Ave, Edison, NJ 08837, USA

ALU France

31-33, rue Jean Jaurès, 92800, Puteaux, France

ALU MEXICO

Av. Insurgentes Sur 1431, Insurgentes Mixcoac, 03920, Ciudad de Mexico, Mexico

Email: press@alu.com



PopUp

temporary
program.

POPUP^A